



INSTRUCTIONS 1011-A00 e

Section	1011
Effective	April 2008
Replaces	251D

Original instructions

Reducers

Series 2000 & 3000

INSTALLATION

OPERATION

MAINTENANCE

First figure of special number squares with the serie :

N° 3635 - 3330 squares with the serie 3000

N° 2420 - 2620 squares with the serie 2000

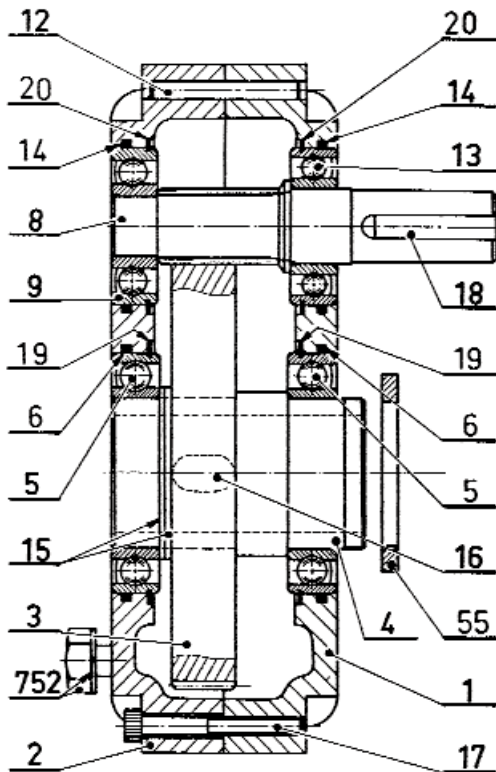


Z.I. La Plaine des Isles - F 89000 AUXERRE - FRANCE
Tel. : +33 (0)3.86.49.86.30 - Fax : +33 (0)3.86.49.87.17
contact@mouvex.com - www.mouvex.com

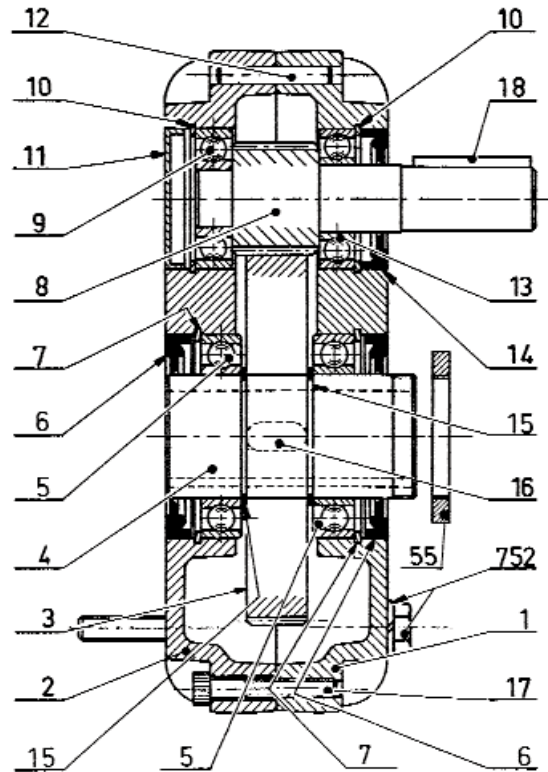
Your distributor :

1. NECESSARY TOOLS

Serie	2000	3000
Allen wrenches	5	6
Open-ended spanner	17	19
Pin drift	Ø 5	Ø 7
Immer circlip clip SAM	190-21	190-21
Rotor wrench FACOM	3 35 P	U 35
Ball bearing wrench FACOM	U 53 P	



Serie 2000



Série 3000

2. DISMANTLING

Unscrew **752** to separate reducer from pump.

Do the draining (reducers lubricated with oil).

Remove **18**, **17** and drive **12** out.

Separate the two half-casings by tapping on the end (driven shaft key **18** side) of driver pinion-shaft **8** and of shaft **4**.

Take **8** and **4** out.

Pull the bearings out of **8** (rotor wrench) and of undissociable assembly **4+3** (ball bearing wrench).

Should it be difficult to part speedreducer from pump, use extraction reference **55** supplied on request.

3. REASSEMBLY

Carefully clean half-casings faces and check gaskets.

Place gaskets, rings and circlip and replace ball bearings on **8** and **4**.

Fill up (see & MAINTENANCE).

Smear half-casings faces with gasket-paste.

Replace half-casing **1**. Take care of gaskets.

Replace **17** without tighten, **12**, then screw **17** up.

Put speed reducer on pump and tighten **752** up.

4. MAINTENANCE



To find the right lubricant (grease or oil) to use, please look at speedreducer-plate :

- **If the last letter of the codename is G :**
lubrication with grease.

Speedreducers are supplied greased for 10 000 hours operation.

- **If the last letter of the codename is H :**
lubrication with oil.

First draining operation after 200 hours operation.
Then every 1 000 hours.

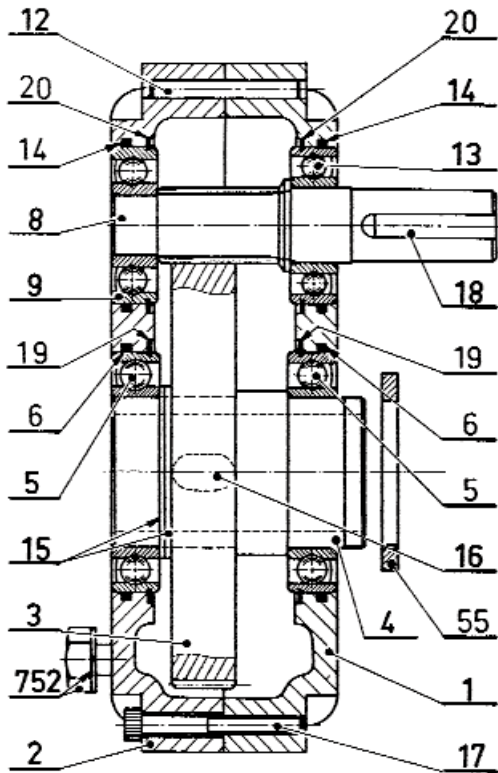
The two half-casings are machined simultaneously, they are an assembly which must not be separated.

Reducer	Grease* (kg)	Oil** (litre)
Serie 2000	0,5	
Serie 3000	1	1

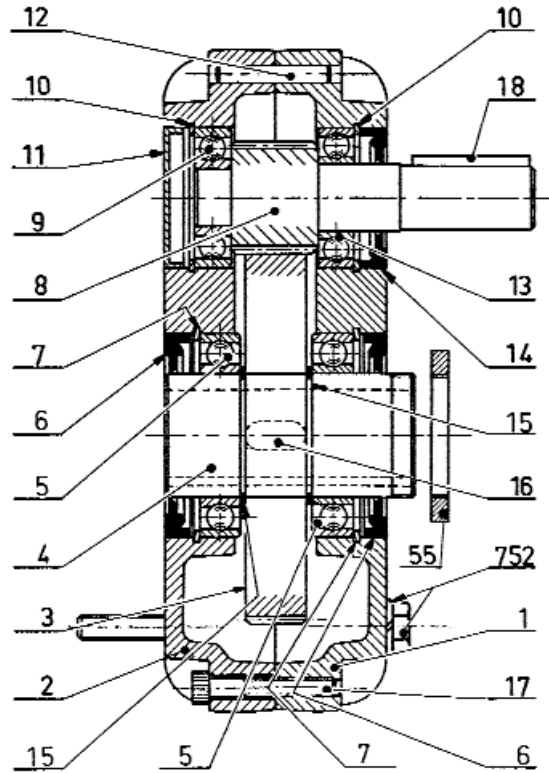
* Grease : special for gears. Example : MOBILUX EPO.

** Specified oil : MOBILUBE HD 80.90.

5. SPARE PARTS



Serie 2000



Série 3000

Reference - Serie		Qty	Description
2000	3000		
° 1	° 1	1	Half casing (2+12) + 11 in serie 3000
° 2	° 2	1	Half casing (2+12) + 11 in serie 3000
° 3	° 3	1	Impeller (+4+15+16)
° 4	° 4	1	Shaft low speed (+3+15+16)
° 5	° 5	2	Ball bearing low speed (+19 in serie 2000)
° 8	° 8	1	Pinion shaft high speed
° 9	° 9	1	Ball bearing high speed (+20 in serie 2000)
-	11	1	Pressed casing
19	-	2	Ball bearing stop-ring low speed
20	-	2	Ball bearing stop-ring high speed
° 13	° 13	1	Ball bearing high speed (+20 in serie 2000)
15	15	2	Outer circlip
16	16	1	Driven shaft key
° 18	° 18	1	Pinion-driven key
° 51	° 51	1	SET OF GASKETS
6	6	2	Gasket low speed
-	7	2	Ball bearing ring low speed
-	10	2	Ball bearing ring high speed
14	14	1*	Gasket high speed * (2 for serie 2000)
° 52	° 52	1	SET OF SCREW AND WASHERS
12	12	2	Pin
17	17	6	Casing screw
752	752	4	Screw and washer
° 55	° 55	1	Extraction nut

° Assemblies and parts available for supply.

To order spare parts, please specify :

- The SERIE and the SERIAL NUMBER of reducer (stamped on the plate)
- NT 1011-A00 with its revision index
- The REFERENCES and QUANTITIES of the parts required.