



INSTRUCTIONS 1011-E00 e

Section	1011
Effective	October 2004
Replaces	347 May 2003

Translation of the
original instructions

Selective valve

INSTALLATION

OPERATION

MAINTENANCE



Z.I. La Plaine des Isles - F 89000 AUXERRE - FRANCE
Tel. : +33 (0)3.86.49.86.30 - Fax : +33 (0)3.86.49.87.17
contact@mouvex.com - www.mouvex.com

Your distributor :

INSTALLATION

The selective valve is flange-connected to pumps CC8-40 - CC8-50 and CC8-65.

Connect each venting orifice of the pneumatic controls **A2** & **B2** and the gutter **B3** to a puppet valve.

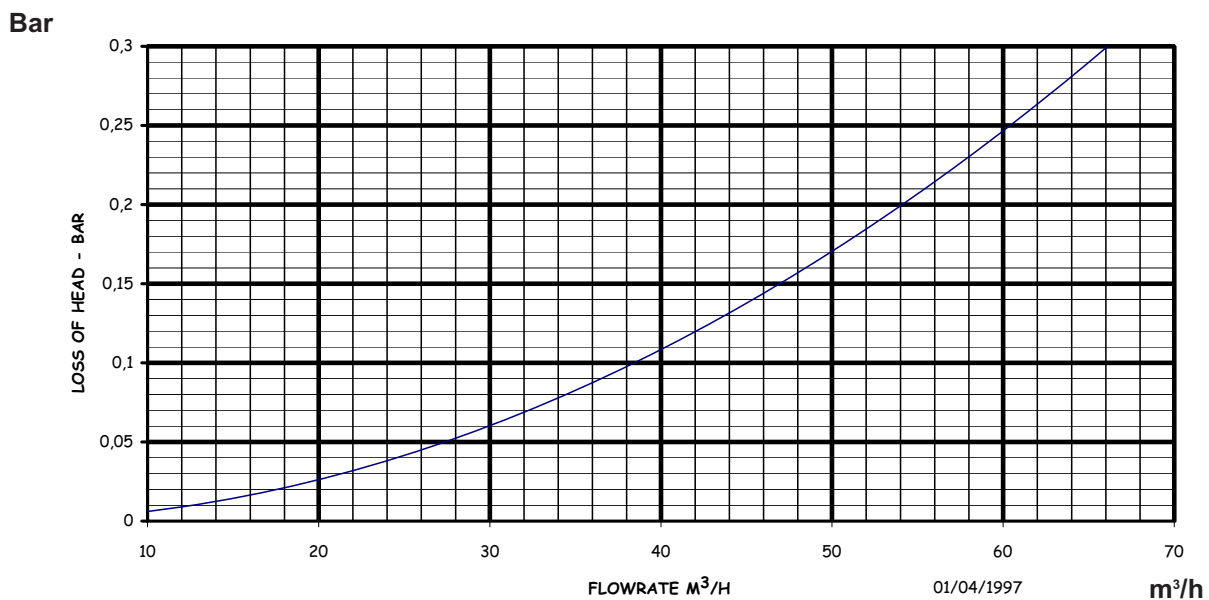
Take care to orient the reduced-passage valve/valves so that their feed orifice **B1** is turned towards the outlet side of the product of the selective valve.

The control air must be filtered and lubricated (use of a lubricating filter in the compressed air network).

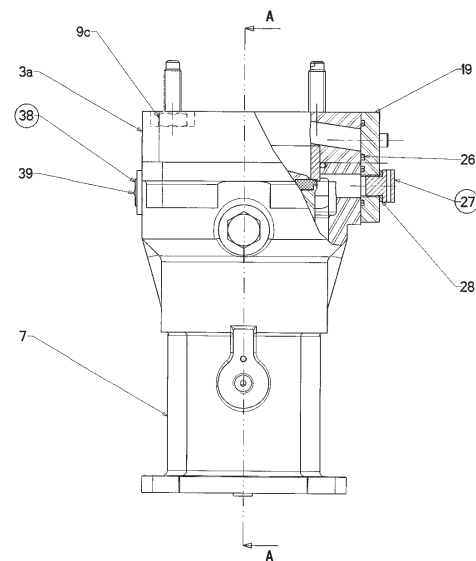
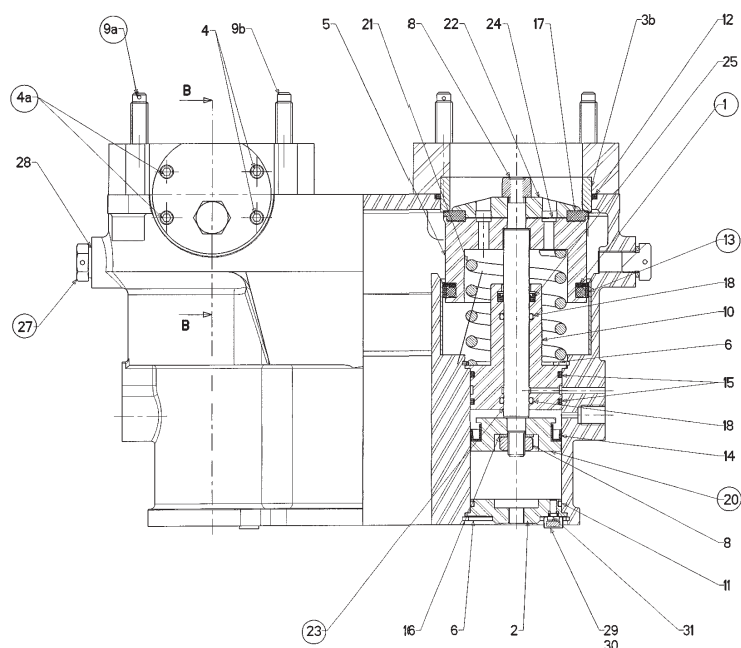
HEAD LOSS - FOD

HEAD LOSS FOD SELECTIVE VALVE
(in the 2 directions of circulation)

$$Y = 7E-05x^2 - 9E-05xR^2 - 0,9998$$



DISMANTLING - REASSEMBLY



TOOLS REQUIRED

- Hexagon spanners 4
- Screwdriver
- Circlip pliers Ø 60
- Box spanner 16
- Flat spanner 16
- 4 Ø M10 nuts
- 1 Press or 2 plastic rods lenght 1,20 m
- 2 Ø M10 nuts
- 2 broad washers

DISMANTLING

Remove the seals **19** or the preset valve.

Remove the lead seal **30**, the screw **31** and the lead-sealing cup **29**.

Remove the circlips **6** and take out the plug **2**.

Hold the nut **8** and unscrew the other.

Fit 2 interlocking nuts on 2 diametrically opposite pins **9** and remove them.

Fit the same device to the other 2 pins, **but do not remove them** (THIS REQUIREMENT MUST BE COMPLIED WITH OTHERWISE THERE IS A RISK THAT VALVE **5** WILL STICK OUT).

Position the valve without a press, hold the flap in place and remove the 2 remaining pins and free the flap which should come out only under the action of the spring.

In the absence of a press, position the 2 threaded rods + washers + nuts ((see § TOOLS REQUIRED) in the 2 free inside threads.

Remove the 2 remaining pins **9** and release the flange **3** by progressively unscrewing the 2 threaded rod nuts.

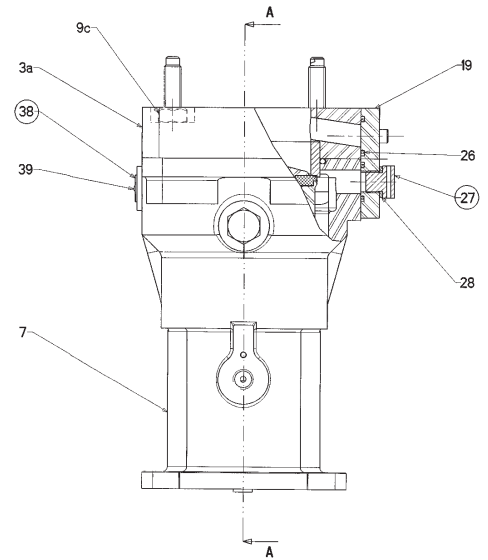
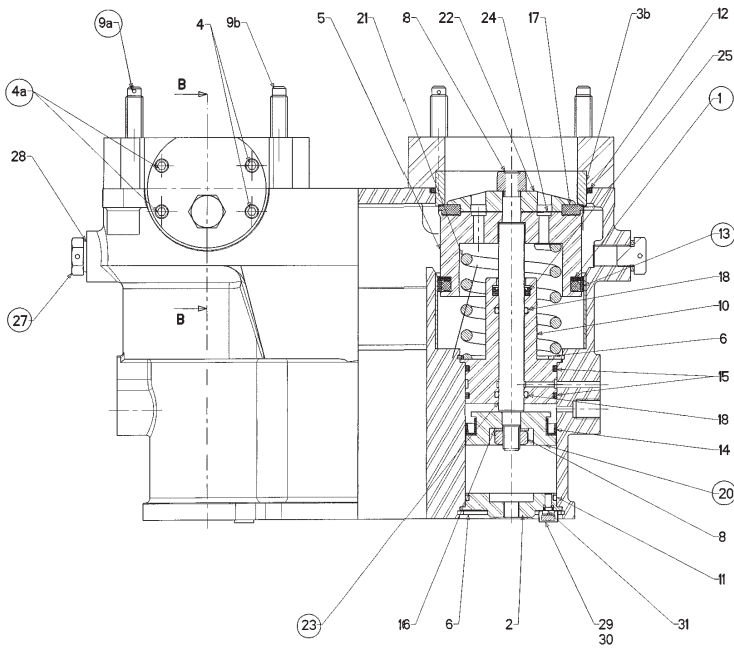
REASSEMBLY

Proceed in the reverse sequence, taking care to lightly lubricate the bore of the pneumatic piston.

MAINTENANCE

No special periodic maintenance required.

SPARE PARTS



* Sets of parts or parts available to order.

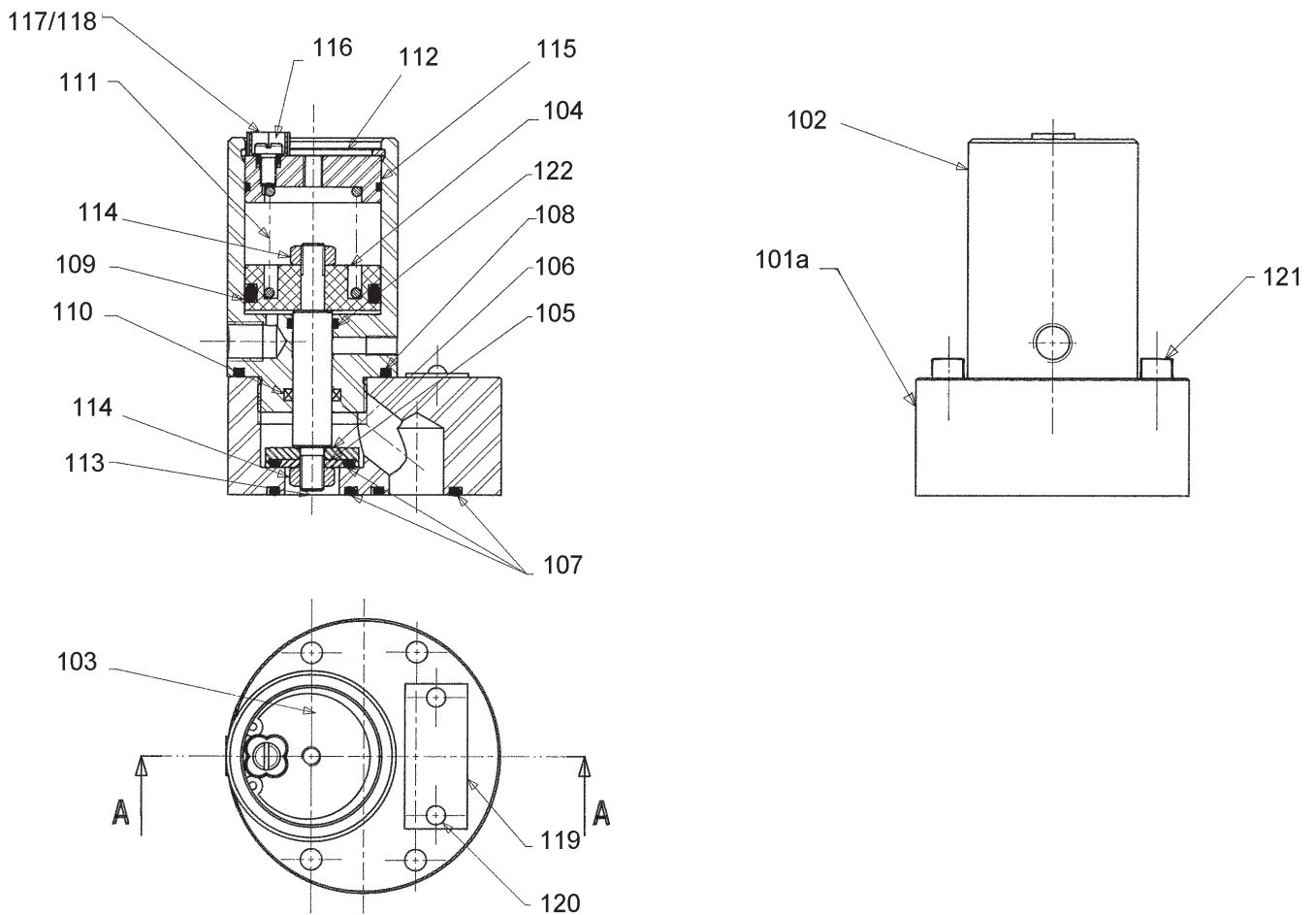
REP.	Qty	DESIGNATION
1	2	Scraper ring
2	2	Plug
3	2	Flange
4	4	Blank washer screw
4a	4	Blank washer embedded screw
5	2	Flap
6	4	Snap ring
7	1	Valve body
8	4	Nut
9a	8	Embedded stud
9b	6	Stud
9c	8	Nut
10	2	Guide
11	2	Plug seal
12	2	Flange seal
13	2	Flap seal
14	2	Piston seal
15	4	Guide seal
16	2	Rod tail seal

REP.	Qty	DESIGNATION
17	2	Flap head seal
18	4	Rod seal
19	2	Blank washer
20	2	Piston
21	2	Spring
22	2	Flap head
23	2	Rod
24	2	Grid
25	2	Rod scraper seal
26	4	Blank washer seal
27	4	Plug
28	4	Plug seal
29	2	Embedded cup
30	2	Lead
38	1	Plate
39	2	Rivet
*36	1	SET OF GUIDE SEALS (15+8+25)
*37	1	SET OF PISTON SEALS (11+14+16)

When ordering spare parts, please indicate :

- TYPE and SERIAL NUMBER of valve (stamped on valve plate)
- The REFERENCE and DESIGNATION of parts required (* : Assemblies and parts available for supply).
- INSTRUCTIONS 1011-E00

REDUCED-PASSAGE (preset valve)



* Sets of parts or parts available to order.

REP .	Qty	DESIGNATION
101a	1	Seat
102	1	Body
103	1	Plug
104	1	Piston
105	1	Flap washer
106	1	Flap
107	3	Seal
108	1	Body seal
109	1	Piston seal
110	1	Rod seal
111	1	Spring

REP .	Qty	DESIGNATION
112	1	Circlips
113	1	Rod
114	2	Nut
115	1	Plug seal
116	1	Lead-sealing screw
117	1	Cup
118	1	Lead seal
119	1	Plate
120	2	Rivet
121	4	Screw
122	1	Seal
*125	1	SET OF SEALS (107+108+109+110+115+122)

When ordering spare parts, please indicate :

- TYPE and SERIAL NUMBER of pump (stamped on pump plate)
- The REFERENCE and DESIGNATION of parts required (* : Assemblies and parts available for supply).
- INSTRUCTIONS 1011-E00