



INSTRUCTIONS 208-D00 e

Section	208
Effective	November 2010
Replaces	February 2005

Original instructions

Oil Lubrication Systems

**INSTALLATION
OPERATION
MAINTENANCE
PARTS LISTS**



Z.I. La Plaine des Isles - F 89000 AUXERRE - FRANCE
Tel. : +33 (0)3.86.49.86.30 - Fax : +33 (0)3.86.49.87.17
contact@mouvex.com - www.mouvex.com

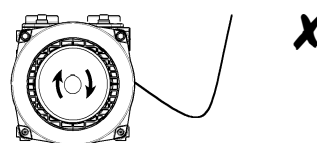
Your distributor :

Oil Lubrication Systems

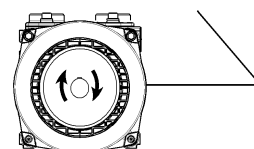
INSTALLATION

Oil Feed Pipes

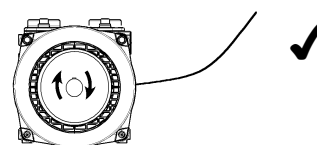
- The oil feed into the compressor / vacuum pump from the oil tank must have a minimum slope of 5° towards the pump.
- Do not allow any kinks or loops in the pipe.
- Ensure the pipe is fully primed before running the compressor.
- Ensure that the pipe is not damaged or squashed.
- Locate the tank at a position higher than RAL 485.



No loops



No Sharp Bends



Correct

Discharge Pipework

The lubricating of the compressor is a total loss system, the oil gets expelled by the compressor,

- Do not allow the expelled oil to drain back into the compressor on shut down.
- Ensure adequate drainage of the oil from the pipe work.

Types Of Oil

MOUVEX recommend the following oils for use in their compressors and vacuum pumps.

Use of any other oil will invalidate the warranty.

Oil Spec.= SAE 20 / ISO 68 Mineral Oil

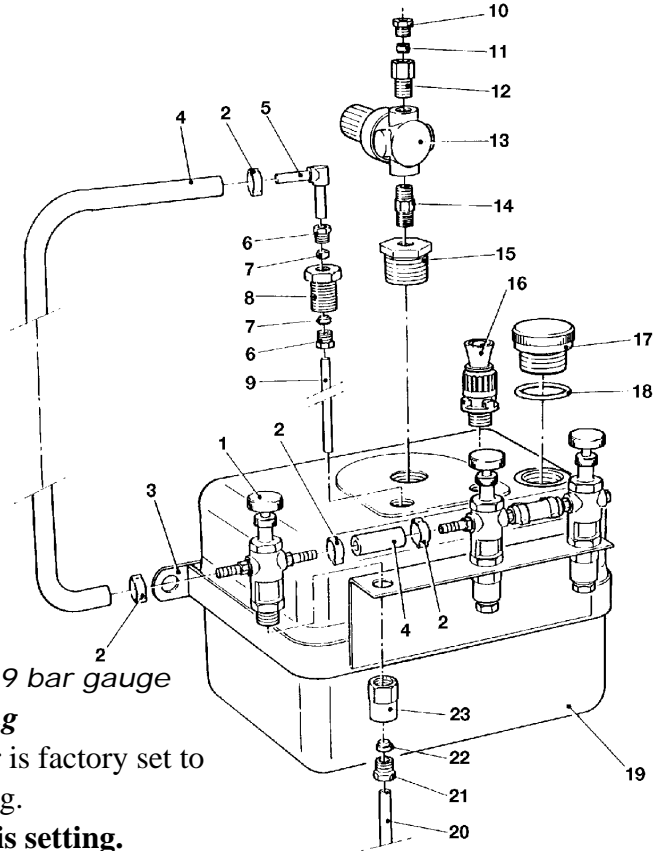
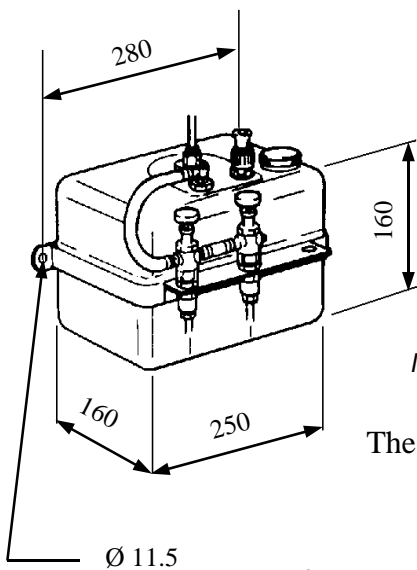
Shell	Energol RC 68
BP	Corina P 68
ESSO	Compressor Oil 68
TOTAL	Cortusa 68
MOBIL	Rarus 426

Lubrication Rates	C56 & C106	C156	O230	RAL 485	C355, C505 & C998
Oil Pump Setting	1 cc/min		2 cc/min	3 cc/min	
No. Of Drip Feed Lubricators (d.f.l.)	1	2		3	2
No. Of Drops Per Minute Per d.f.l.	30 d.p.m.	15 d.p.m.	30 d.p.m.	30 d.p.m.	45 d.p.m.

Oil Lubrication Systems

5 LITRE PRESSURE REGULATED OIL TANK

Assembly Nos.	Where Used
514333.00	(triple) RAL 485



Max. Pressure 0.9 bar gauge

Warning

The pressure regulator is factory set to 0.9 bar g.

Do not alter this setting.

Lubrication Rates quoted are for machines running at 1500 rpm*

* For speeds less than 1500 rpm, rate can be reduced pro-rata,

e.g. 30 d.p.m. @ 1500 r.p.m can be reduced to 20 drops per minute at 1000 rpm.

Warning Check the drips regularly when the compressor / vacuum pump is running.

Flow rates vary depending on the pressure or vacuum.

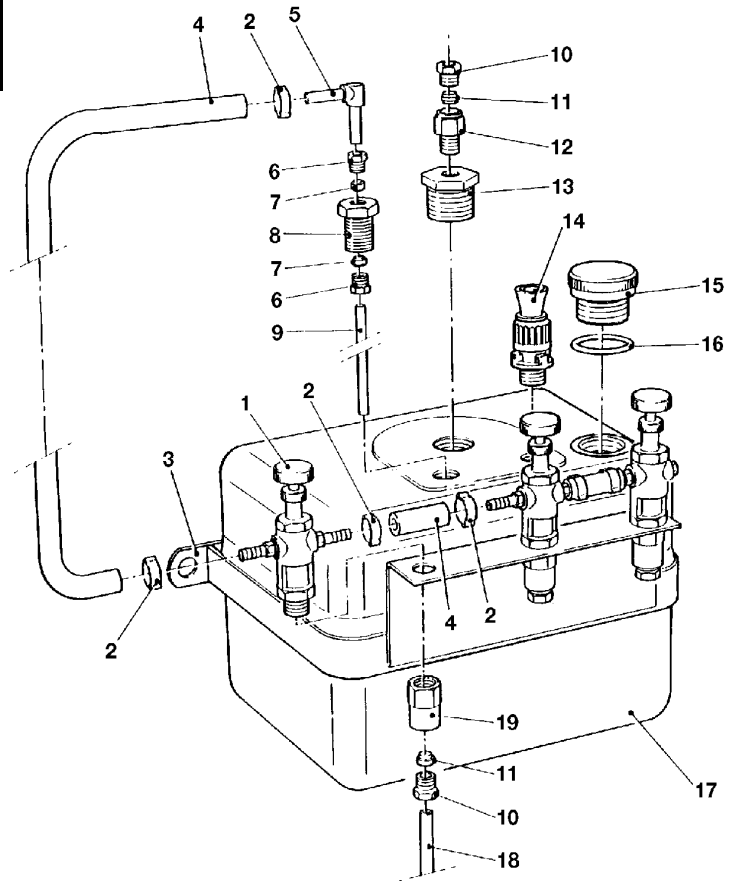
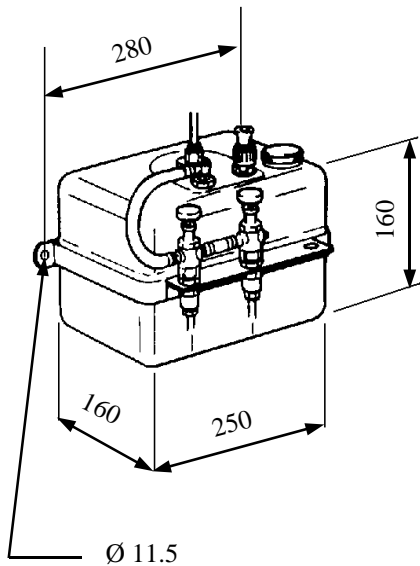
PARTS LIST

No	Part No.	Description	Qty	No	Part No.	Description	Qty
1	219445	Drip Feed Lubricator	3/2/1	13	220672	Pressure Regulator - Preset to 0.9 Bar g.	1
2	220567	Pipe Clip - 1/2" I.D.	6/4/2	14	220690	Nipple - 1/8" BSP M x M	1
3	220659	Mounting Bracket	1	15	220636	Reducing Bush - 3/4" BSP - 1/8" BSP	1
4	220654	Clear Pipe - 1/2" O.D. x 160 mm	1	16	219604	Relief Valve - 2 Bar	1
5	220693	Elbow Stem - 1/4" x 1/4"	1	17	220711	Filler Cap	1
6	220686	Tubing Nut - 1/4"	2	18	220520	"O" Seal	1
7	220687	Olive - 1/4"	2	19	220635	Oil Tank 5 Litre	1
8	220598	Adapter - 1/4" x 3/8" BSP Male	1	20	207597	Cu Pipe - 5/16" O.D. x 4 Ft.	3/2/1
9	Finished	Cu Tube - 1/4" O.D. x 160 mm	1	21	220451	Tubing Nut - 5/16"	3/2/1
10	220683	Tubing Nut - 3/16"	1	22	220450	Olive - 5/16"	3/2/1
11	220682	Olive - 3/16"	1	23	220684	Straight Adapter (Female) - 5/16"	3/2/1
12	220689	Male Adapter - 3/16" X 1/8" BSP	1	24	220655	Clear Pipe - 1/2" O.D. x 36 mm	2/1/0

Oil Lubrication Systems

5 LITRE STANDARD OIL TANK

Assembly Nos.	Where Used
514332.00 (triple)	RAL 485



Lubrication Rates quoted are for machines running at 1500 rpm*

* For speeds less than 1500 rpm, rate can be reduced pro-rata,
e.g. 30 d.p.m. @ 1500 r.p.m can be reduced to 20 drops per minute at 1000 rpm.

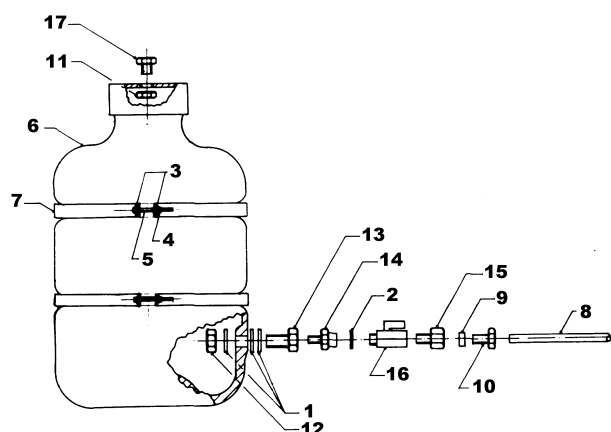
Warning Check the drips regularly when the compressor / vacuum pump is running.
Flow rates vary depending on the pressure or vacuum.

PARTS LIST

No	Part No.	Description	Qty	No	Part No.	Description	Qty
1	219445	Drip Feed Lubricator	3/2/1	11	220450	Olive - $\frac{5}{16}$ "	4/3/2
2	220567	Pipe Clip - $\frac{1}{2}$ " I.D.	6/4/2	12	220452	Male Adapter - $\frac{5}{16}$ " X $\frac{1}{4}$ " BSP	1
3	220659	Mounting Bracket	1	13	220639	Reducing Bush - $\frac{3}{4}$ " BSP x $\frac{1}{4}$ " BSP	1
4	220654	Clear Pipe - $\frac{1}{2}$ " O.D. x 160 mm	1	14	219604	Relief Valve (2 Bar)	1
5	220693	Universal Elbow Stem - $\frac{1}{4}$ " x $\frac{1}{4}$ "	1	15	220711	Filler Cap	1
6	220686	Tubing Nut - $\frac{1}{4}$ "	2	16	220520	"O" Ring	1
7	220687	Olive - $\frac{1}{4}$ "	2	17	220635	Plastic Tank - 5 Litre	1
8	220598	Bulk Head Adapter - $\frac{1}{4}$ " x $\frac{3}{8}$ " BSPM	1	18	207597	Copper Tube - $\frac{5}{16}$ " x 4Ft.	3/2/1
9	Finished	Copper Tube - $\frac{1}{4}$ " O.D. x 160 mm	1	19	220684	Female Adapter - $\frac{5}{16}$ " x $\frac{1}{4}$ " BSP	3/2/1
10	220451	Tubing Nut - $\frac{5}{16}$ "	4/3/2	20	220655	Plastic Pipe - $\frac{1}{2}$ " O.D. x 36 mm	2/1/0

Oil Lubrication Systems

OIL LUBRICATING PUMP AND 25 LITRE OIL TANK



MAINTENANCE

Every Week

- Refill the tank regularly to ensure that the level is not allowed to fall to the point where air can be drawn into the oil pump. Use only clean oil of the grade specified in these instructions.
- Check fittings to ensure there are no oil leaks and tighten if necessary.

Every 12 Months (Or if the compressor has been out of action for a long period of time)

- Replace the phosphor bronze coupling **221779**.
- Clean the pump.

PARTS LIST - 25 Litre OIL Tank (214.325)

No	Part No.	Description	Qty	No	Part No.	Description	Qty
1	219188	Dowty Seal $\frac{3}{4}$ "	3	10	220451	Tubing Nut - $\frac{5}{16}$ "	1
2	219731	Dowty Seal $\frac{3}{8}$ "	1	11	NC *	Locknut $\frac{1}{4}$ " BSP	1
3	NC *	Plain Washer $\frac{3}{8}$ "	4	12	NC *	Locknut $\frac{3}{4}$ " BSP	1
4	213727	Nut M10	2	13	NC *	Connector $\frac{3}{4}$ " x $\frac{1}{2}$ " O.D.	1
5	NC *	Set Screw M10 x 70mm	2	14	NC *	Adapter $\frac{3}{8}$ " x $\frac{1}{2}$ " O.D.	1
6	NC *	Tank	1	15	NC *	Adapter $\frac{3}{8}$ " x $\frac{5}{16}$ " O.D.	1
7	NC *	Mounting Bands	2	16	NC *	Ball Valve $\frac{3}{8}$ "	1
8	207597	Cu Pipe - $\frac{5}{16}$ " x 4Ft.	1	17	NC *	Breather $\frac{1}{4}$ " BSP	1
9	220450	Olive - $\frac{5}{16}$ "	1				

Oil Pump Cleaning Procedure

- Stop the compressor and disconnect the oil feed from the tank.
- Remove the oil tank from the cradle, drain the oil, wash out with petrol / kerosene, drain again ensuring that all residues are removed. Replace and reconnect the feed to the pump.
- Fill the tank with sufficient petrol / kerosene. Loosen feed pipe connection at the pump end to ensure all air in the pipe is expelled, then re-tighten.
- Disconnect the oil feed pipe fittings next to the body of the compressor and insert blanked fittings to reseal the body.
- Start the compressor and run for 10 minutes or until the petrol starts to drip out of the free ends of the oil feed pipes.
- Stop the compressor and re-fit the oil feed pipes back onto the compressor.
- Drain the oil tank and fill with the correct grade oil.
- Ensure that the oil feed is fully primed before starting the compressor again.

Lubrication Rates

The oil pumps are factory set to 1, 2 & 3cc/min. @ 1500 rpm (compressor speed).

Do not re-adjust the pump settings. Consumption reduces pro-rata as the compressor runs slower. Ensure the 2 off plastic covers remain in position at all times to prevent ingress of water.

Daily Consumption (running continuously at 1500 rpm)

1 cc/min. = 1.44 litres per day ... 2 cc/min. = 2.88 litres per day ... 3 cc/min. = 4.32 litres per day

* Not available for sale.