

**PARTS LIST**  
**PUMPS**  
**C24 i - C36 i**

Keep this parts lists with Installation, Operation and Maintenance Instructions.

To order the required spare parts, indicate the desired Reference(s).

- ◆ Sets of parts or parts available to order.

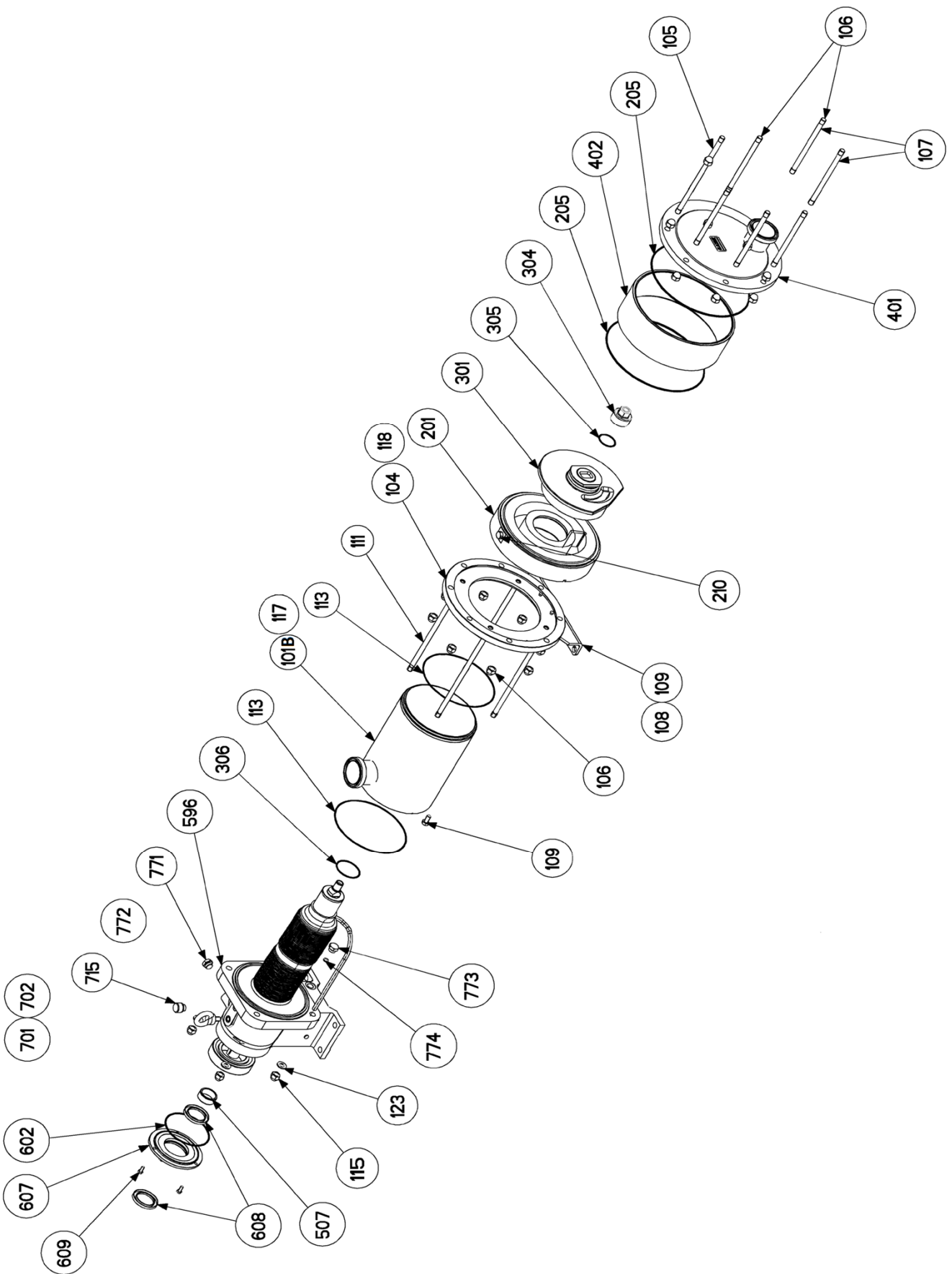
CVT : FEP encapsulated FKM ; FDA : Food and Drug Administration (21 CFR 177 2600)

Z.I. la Plaine des Isles - 2 rue des Caillottes F-89000 AUXERRE - France

Tel : +33 (0)3 86 49 86 30 • Fax : +33 (0)3 86 49 87 17

contact@mouvex.com • www.mouvex.com

# C24 i - C36 i



## C24 i

\* 1, 2, 4... : Quantity in equipment - (1), (2), (4)... : Quantity in kit

Item	Available	Description	Qty*	Ref.	Maintenance kit	Wear part
<b>8</b>	◆	<b>Plug</b>	<b>1</b>	<b>312196.00</b>		
701		Lifting eye bolts	(1)			
702		Seal	(1)			●
715		Breather	(1)			●
771		SEAL	(1)			●
772		Plug	(1)			
773		Plug	(1)			
774		SEAL	(1)			●
<b>9</b>	◆	<b>Bearing gaskets _ screws</b>	<b>1</b>	<b>315283.00</b>		
507		SEAL RING	(1)			●
602		Seal	(1)			●
608		LIP SEAL	(2)			●
609		Screw	(3)			
<b>100</b>	◆	<b>Inlet Manifold Flange ASEPTIK DIN 11864-BF-A DN80</b>	<b>1</b>	<b>313715.00</b>		
<b>100</b>	◆	<b>Inlet Manifold Connection CLAMP ISO 76</b>	<b>1</b>	<b>312234.00</b>		
<b>100</b>	◆	<b>Inlet Manifold Connection DIN 80</b>	<b>1</b>	<b>312236.00</b>		
<b>100</b>	◆	<b>Jacketed Inlet Manifold Flange ASEPTIK DIN 11864-BF-A DN80</b>	<b>1</b>	<b>313716.00</b>		
<b>100</b>	◆	<b>Jacketed Inlet Manifold Connection CLAMP ISO 76</b>	<b>1</b>	<b>312911.05</b>		
<b>100</b>	◆	<b>Jacketed Inlet Manifold Connection DIN 80</b>	<b>1</b>	<b>312910.05</b>		
<b>100</b>	◆	<b>Jacketed Inlet Manifold Flange PN16 DN80</b>	<b>1</b>	<b>312906.05</b>		
<b>100</b>	◆	<b>Jacketed Inlet Manifold Flange PN20 DN80</b>	<b>1</b>	<b>312908.05</b>		
<b>100</b>	◆	<b>Jacketed Inlet Manifold Connection SMS 76</b>	<b>1</b>	<b>312907.05</b>		
<b>100</b>	◆	<b>Inlet Manifold Flange PN16 DN80</b>	<b>1</b>	<b>312182.00</b>		
<b>100</b>	◆	<b>Inlet Manifold Flange PN20 DN80</b>	<b>1</b>	<b>312230.00</b>		
<b>100</b>	◆	<b>Inlet Manifold Connection SMS 76</b>	<b>1</b>	<b>312228.00</b>		
101B		Main body	(1)			
104		Main body flange	(1)			
108		Support foot	(1)			
109		Screw	(2)			
117		Pin	(1)			
118		Pin	(1)			
124		Plug (with Jacketed Inlet )	(2)			
<b>119</b>	◆	<b>Set of studs and nuts</b>	<b>1</b>	<b>312184.00</b>		
105		STUD	(6)			
106		Blind nut	(16)			
107		STUD	(2)			
111		STUD	(4)			
115		Blind nut	(4)			
123		Washer	(4)			
<b>200</b>	◆	<b>Set cylinder_Piston</b>	<b>1</b>	<b>313401.00</b>	■	
201		Complete Cylinder	(1)			●
210		Screw	(1)			
301		Piston	(1)			●
304	◆	Piston nut	1	219426		●
<b>206</b>	◆	<b>Set of CVT 'O' ring seals</b>	<b>1</b>	<b>312190.00</b>	■	
<b>206</b>	◆	<b>Set of FKM lip seals ('L' rings) FDA</b>	<b>1</b>	<b>312501.02</b>	■	
<b>206</b>	◆	<b>Set of L. PTFE seals ('L' rings)</b>	<b>1</b>	<b>312779.05</b>	■	
<b>206</b>	◆	<b>Set of FKM 'O' ring seals</b>	<b>1</b>	<b>312246.00</b>	■	
113		O-RING	(2)			●
205		O-RING	(2)			●
305		Seal	(1)			●
306		O-RING	(1)			●

## C24 i

\* 1, 2, 4... : Quantity in equipment - (1), (2), (4)... : Quantity in kit

Item	Available	Description	Qty*	Ref.	Maintenance kit	Wear part
400	◆	Complete Front cover Flange ASEPTIK DIN 11864-BF-A DN80	1	313717.00		
400	◆	Complete Front Cover Connection CLAMP ISO 76	1	312251.00		
400	◆	Complete Front cover Connection DIN 80	1	312253.00		
400	◆	Complete Jacketed Front cover - Flange ASEPTIK DIN 11864-BF-A DN80	1	313718.00		
400	◆	Complete Jacketed Front cover - Connection CLAMP ISO 76	1	312921.05		
400	◆	Complete Jacketed Front cover - Connection DIN 80	1	312922.05		
400	◆	Complete Jacketed Front cover - Flange PN16 DN80	1	312918.05		
400	◆	Complete Jacketed Front cover - Flange PN20 DN80	1	312923.05		
400	◆	Complete Jacketed Front cover - Connection SMS 76	1	312919.05		
400	◆	Complete Front cover Flange PN16 DN80	1	312191.00		
400	◆	Complete Front cover Flange PN20 DN80	1	312255.00		
400	◆	Complete Front cover Connection SMS 76	1	312247.00		
401	◆	Jacketed Front cover Flange ASEPTIK DIN 11864-BF-A DN80	1	313714.00		
401	◆	Jacketed Front cover Flange PN16 DN80	1	312924.05		
401	◆	Jacketed Front cover Flange PN20 DN80	1	312929.05		
401	◆	Jacketed Front cover Connection CLAMP ISO 76	1	312927.05		
401	◆	Jacketed Front cover Connection DIN 80	1	312928.05		
401	◆	Jacketed Front cover Connection SMS 76	1	312925.05		
401	◆	Front cover Flange ASEPTIK DIN 11864-BF-A DN80	1	313713.00		
401	◆	Front cover Flange PN20 DN80	1	312256.00		
401	◆	Front cover Flange PN16 DN80	1	312192.00		
401	◆	Front Cover Connection CLAMP ISO 76	1	312252.00		
401	◆	Front cover Connection DIN 80	1	312254.00		
401	◆	Front cover Connection SMS 76	1	312248.00		
402		Outlet tube	(1)			
407		Plug (with Jacketed Front Cover)	(1)			
596	◆	Complete transmission with Pressure switch bellows monitoring system	1	313466.02	■	●
596	◆	Complete transmission with ATEX pressure switch bellows monitoring system	1	313827.01	■	●
596	◆	Complete transmission without Bellows monitoring system	1	314202.01	■	●

# C36 i

\* 1, 2, 4... : Quantity in equipment - (1), (2), (4)... : Quantity in kit

Item	Available	Description	Qty*	Ref.	Maintenance kit	Wear part
<b>8</b>	◆	<b>Plug</b>	<b>1</b>	<b>312196.00</b>		
701		Lifting eye bolts	(1)			
702		Seal	(1)			●
715		Breather	(1)			●
771		SEAL	(1)			●
772		Plug	(1)			
773		Plug	(1)			
774		SEAL	(1)			●
<b>9</b>	◆	<b>Bearing gaskets _ screws</b>	<b>1</b>	<b>315283.00</b>		
507		SEAL RING	(1)			●
602		Seal	(1)			●
608		LIP SEAL	(2)			●
609		Screw	(3)			
<b>100</b>	◆	<b>Inlet Manifold Flange ASEPTIK DIN 11864-BF-A DN80</b>	<b>1</b>	<b>313715.00</b>		
<b>100</b>	◆	<b>Inlet Manifold Connection CLAMP ISO 76</b>	<b>1</b>	<b>312234.00</b>		
<b>100</b>	◆	<b>Inlet Manifold Connection DIN 80</b>	<b>1</b>	<b>312236.00</b>		
<b>100</b>	◆	<b>Jacketed Inlet Manifold Flange ASEPTIK DIN 11864-BF-A DN80</b>	<b>1</b>	<b>313716.00</b>		
<b>100</b>	◆	<b>Jacketed Inlet Manifold Connection CLAMP ISO 76</b>	<b>1</b>	<b>312911.05</b>		
<b>100</b>	◆	<b>Jacketed Inlet Manifold Connection DIN 80</b>	<b>1</b>	<b>312910.05</b>		
<b>100</b>	◆	<b>Jacketed Inlet Manifold Flange PN16 DN80</b>	<b>1</b>	<b>312906.05</b>		
<b>100</b>	◆	<b>Jacketed Inlet Manifold Flange PN20 DN80</b>	<b>1</b>	<b>312908.05</b>		
<b>100</b>	◆	<b>Jacketed Inlet Manifold Connection SMS 76</b>	<b>1</b>	<b>312907.05</b>		
<b>100</b>	◆	<b>Inlet Manifold Flange PN16 DN80</b>	<b>1</b>	<b>312182.00</b>		
<b>100</b>	◆	<b>Inlet Manifold Flange PN20 DN80</b>	<b>1</b>	<b>312230.00</b>		
<b>100</b>	◆	<b>Inlet Manifold Connection SMS 76</b>	<b>1</b>	<b>312228.00</b>		
101B		Main body	(1)			
104		Main body flange	(1)			
108		Support foot	(1)			
109		Screw	(2)			
117		Pin	(1)			
118		Pin	(1)			
124		Plug (with Jacketed Inlet )	(2)			
<b>119</b>	◆	<b>Set of studs and nuts</b>	<b>1</b>	<b>312260.00</b>		
105		STUD	(6)			
106		Blind nut	(16)			
107		STUD	(2)			
111		STUD	(4)			
115		Blind nut	(4)			
123		Washer	(4)			
<b>200</b>	◆	<b>Set cylinder_Piston</b>	<b>1</b>	<b>313403.00</b>	■	
201		Complete Cylinder	(1)			●
210		Screw	(1)			
301		Piston	(1)			●
304	◆	Piston nut	1	219455		●
<b>206</b>	◆	<b>Set of CVT 'O' ring seals</b>	<b>1</b>	<b>312190.00</b>	■	
<b>206</b>	◆	<b>Set of FKM lip seals ('L' rings) FDA</b>	<b>1</b>	<b>312501.02</b>	■	
<b>206</b>	◆	<b>Set of L. PTFE seals ('L' rings)</b>	<b>1</b>	<b>312779.05</b>	■	
<b>206</b>	◆	<b>Set of FKM 'O' ring seals</b>	<b>1</b>	<b>312246.00</b>	■	
113		O-RING	(2)			●
205		O-RING	(2)			●
305		Seal	(1)			●
306		O-RING	(1)			●

## C36 i

\* 1, 2, 4... : Quantity in equipment - (1), (2), (4)... : Quantity in kit

Item	Available	Description	Qty*	Ref.	Maintenance kit	Wear part
400	◆	Complete Front cover Flange ASEPTIK DIN 11864-BF-A DN80	1	313717.00		
400	◆	Complete Front Cover Connection CLAMP ISO 76	1	312251.00		
400	◆	Complete Front cover Connection DIN 80	1	312253.00		
400	◆	Complete Jacketed Front cover - Flange ASEPTIK DIN 11864-BF-A DN80	1	313718.00		
400	◆	Complete Jacketed Front cover - Connection CLAMP ISO 76	1	312921.05		
400	◆	Complete Jacketed Front cover - Connection DIN 80	1	312922.05		
400	◆	Complete Jacketed Front cover - Flange PN16 DN80	1	312918.05		
400	◆	Complete Jacketed Front cover - Flange PN20 DN80	1	312923.05		
400	◆	Complete Jacketed Front cover - Connection SMS 76	1	312919.05		
400	◆	Complete Front cover Flange PN16 DN80	1	312191.00		
400	◆	Complete Front cover Flange PN20 DN80	1	312255.00		
400	◆	Complete Front cover Connection SMS 76	1	312247.00		
401	◆	Jacketed Front cover Flange ASEPTIK DIN 11864-BF-A DN80	1	313714.00		
401	◆	Jacketed Front cover Flange PN16 DN80	1	312924.05		
401	◆	Jacketed Front cover Flange PN20 DN80	1	312929.05		
401	◆	Jacketed Front cover Connection CLAMP ISO 76	1	312927.05		
401	◆	Jacketed Front cover Connection DIN 80	1	312928.05		
401	◆	Jacketed Front cover Connection SMS 76	1	312925.05		
401	◆	Front cover Flange ASEPTIK DIN 11864-BF-A DN80	1	313713.00		
401	◆	Front cover Flange PN20 DN80	1	312256.00		
401	◆	Front cover Flange PN16 DN80	1	312192.00		
401	◆	Front Cover Connection CLAMP ISO 76	1	312252.00		
401	◆	Front cover Connection DIN 80	1	312254.00		
401	◆	Front cover Connection SMS 76	1	312248.00		
402		Outlet tube	(1)			
407		Plug (with Jacketed Front Cover)	(1)			
596	◆	Complete transmission with Pressure switch bellows monitoring system	1	313466.02	■	●
596	◆	Complete transmission with ATEX pressure switch bellows monitoring system	1	313827.01	■	●
596	◆	Complete transmission without Bellows monitoring system	1	314202.01	■	●