

PARTS LIST
SCREW COMPRESSOR
B1500

Keep this parts lists with Installation, Operation and Maintenance Instructions.

To order the required spare parts, indicate the desired Reference(s).

- ◆ Sets of parts or parts available to order.

[PSM] : ONLY FOR MOUVEX SERVICE POINTS

SERVICE KIT A : Bearings, sets of shims, gear, bronze seals, bushings, sleeves, lip seals and couple of screws.

SERVICE KIT B : Bearings, sets of shims and gear.

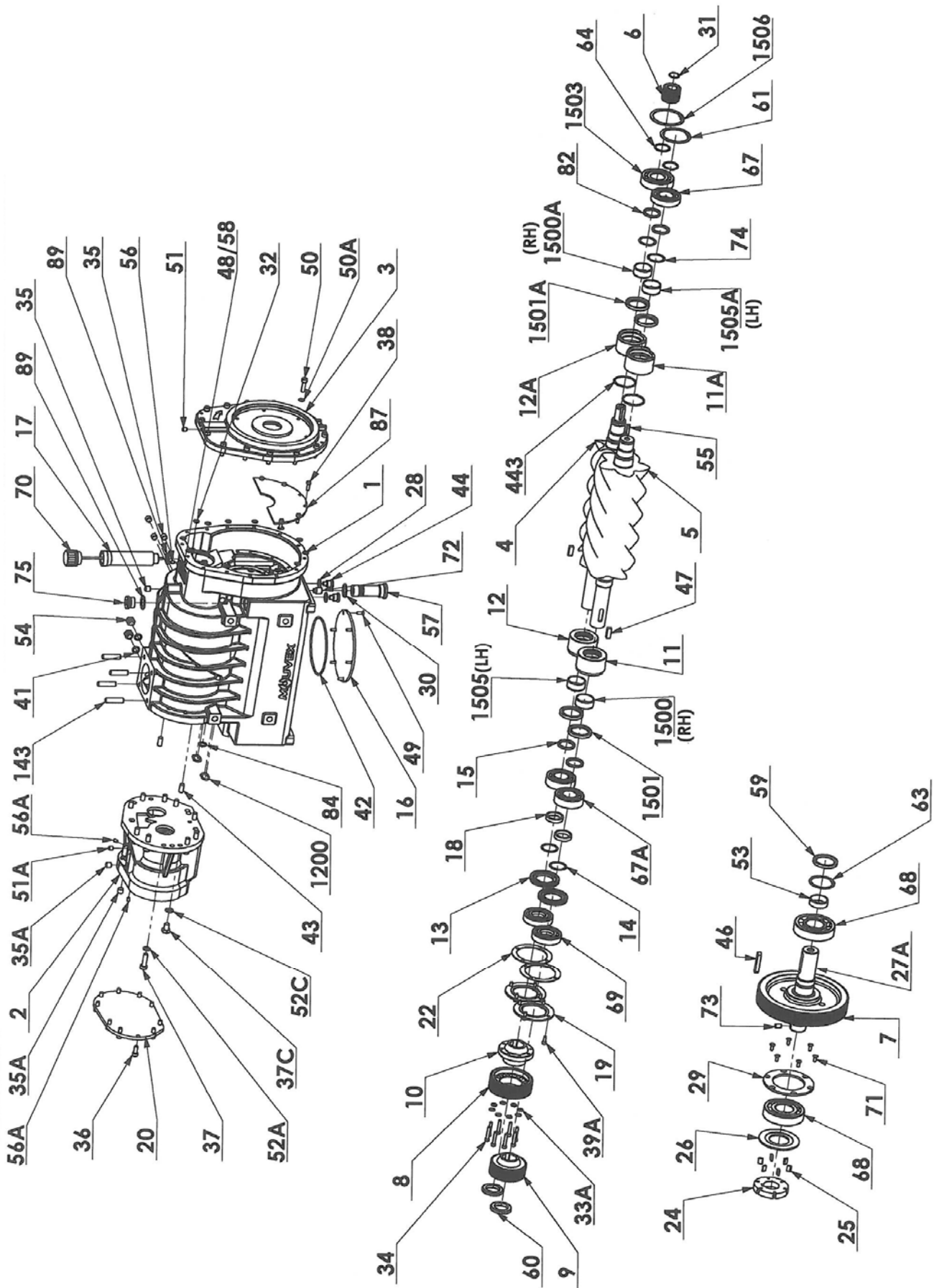
SERVICE KIT C : Bearings, sets of shims, gear, synchronization gears, bronze seals, sleeves, lip seals, complete gearbox, couple of screws, seals, washers and circlips.

Z.I. la Plaine des Isles - 2 rue des Caillottes F-89000 AUXERRE - France

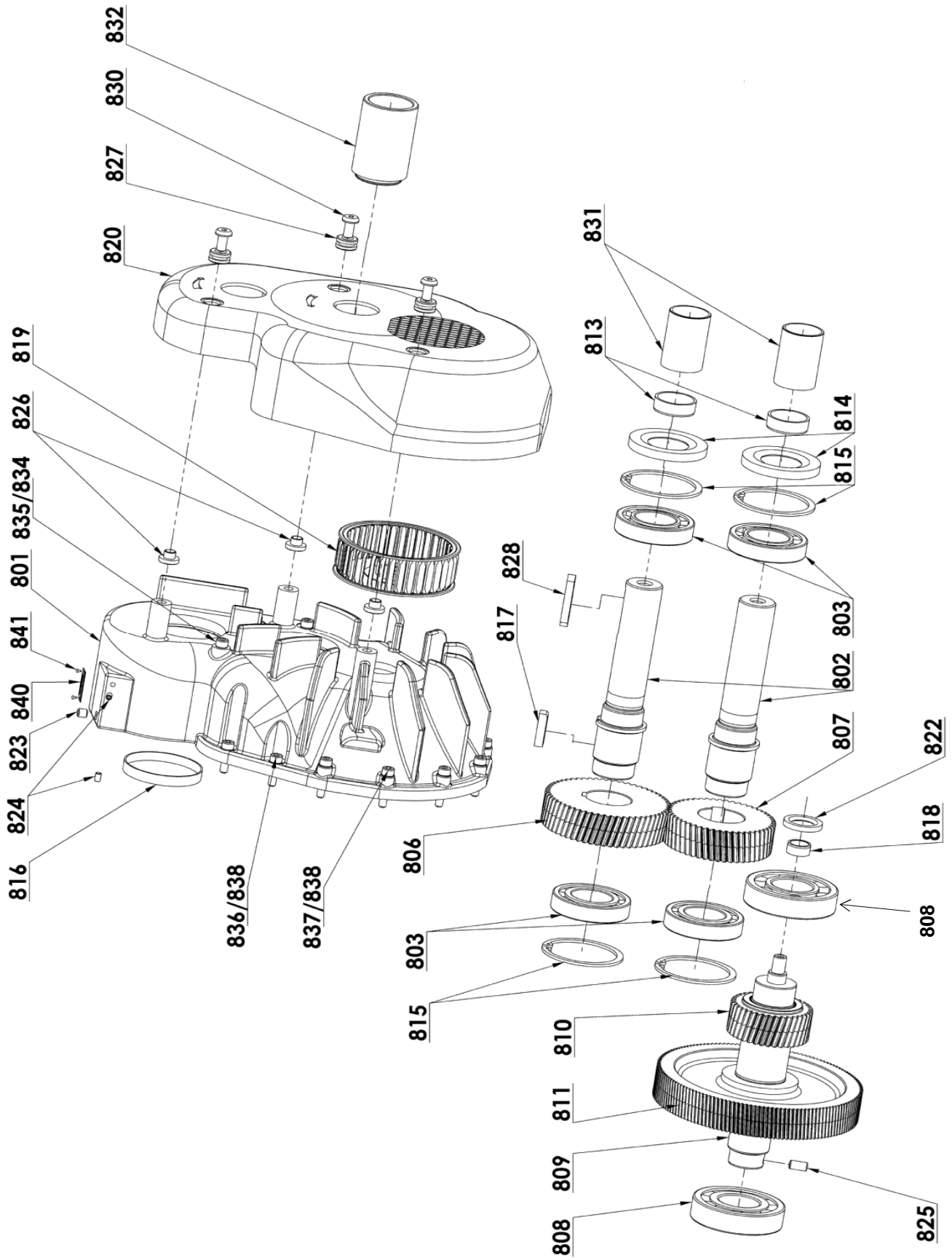
Tel : +33 (0)3 86 49 86 30 • Fax : +33 (0)3 86 49 87 17

contact@mouvex.com • www.mouvex.com

B1500



MULTIPLIER



B1500

* 1, 2,4... : Quantity in equipment - (1), (2), (4)... : Quantity in kit

Item	Available	Description	Qty*	Ref.	Maintenance kit	Wear part
1	◆	BODY	1	223944		
24	◆	ROTOR	1	219140		●
25	◆	PUMP VANE	6	218823		●
44	◆	MAGNETIC PLUG	2	215228		
57	◆	STRAINER	1	218813	■	●
59	◆	LIP SEAL	1	215438		●
116	◆	GASKET	1	215088	■	
141	◆	GASKET	1	219281	■	
146	◆	GEAR BOX ASSEMBLY B1500 (NOT ASSEMBLED) [PSM]	1	313869.02		
10		BRACKET	(1)			
13		LUBRIFICATION SPACER	(2)			
14		SET OF SHIMS	(2)			
15		CENTRIFUGATION DISK	(2)			
18		SPACER	(2)			
19		BEARING FLANGE	(2)			
20		COVER	(1)			
22		SET OF SHIMS	(1)			
33A		WASHER	(8)			
34		SCREW	(8)			
35		PLUG	(2)			
36		SCREW	(10)			
37		SCREW	(10)			
37C		SCREW	(2)			
39A		SCREW	(8)			
47		KEY	(2)			
51A		PLUG	(1)			
52A		WASHER	(10)			
52C		WASHER	(2)			
56A		SCREW	(3)			
60		BEARING NUT	(2)			
67A		BALL BEARING	(2)			
69		THRUST BALL BEARING	(2)			
84		O-RING	(1)			
145	◆	SET OF SCREWS B1500 [PSM]	1	313868.01		
212	◆	GEAR BOX AND SEALS 11 12 TYPHON II SP B1500 (NOT ASSEMBLED) [PSM]	1	313867.00		
2	◆	GEAR BOX MISTRAL TYPHON II [PSM]	1	212999		
11		BRONZE SEAL (RIGHT) TYPHON II SP	(1)			
12		BRONZE SEAL (LEFT) TYPHON II SP	(1)			
1500		MH6 SLEEVE RH	(1)			
1501		RIGHT LIP	(2)			
1505		MH6 SLEEVE LH	(1)			
167	◆	MULTIPLIER 20R	1	312134.00		
6		SMALL GEAR	(1)			
7		LARGE GEAR	(1)			
27A		INLET SHAFT	(1)			
31		CIRCLIPS	(1)			
32		SEAL	(1)			
55		KEY	(1)			
167A	◆	MULTIPLIER 30R	1	312171.00		
6		SMALL GEAR	(1)			
7		LARGE GEAR	(1)			
27A		INLET SHAFT	(1)			
31		CIRCLIPS	(1)			
32		SEAL	(1)			
55		KEY	(1)			

B1500

* 1, 2,4... : Quantity in equipment - (1), (2), (4)... : Quantity in kit

Item	Available	Description	Qty*	Ref.	Maintenance kit	Wear part
373	◆	OIL DIPSTICK ASSEMBLY MISTRAL TYPHON II B1500	1	312656.01	■	
17		OIL DIPSTICK PIPE	(1)			
70	◆	DIPSTICK	1	312655.01		
75		PLUG	(1)			
89		SEAL WASHER	(2)			
800	◆	MULTIPLIER 19R 22L	1	313964.02	■	
32		SEAL	(1)			
801		BODY	(1)			
802		INLET SHAFT	(2)			
803		BALL BEARING	(4)			
806		GEAR 58 TEETH	(1)			
807		GEAR 50 TEETH	(1)			
808		BALL BEARING	(2)			
809		SECONDARY SHAFT	(1)			
810		SMALL GEAR	(1)			
811		LARGE GEAR	(1)			
813	◆	SLEEVE	2	215763		●
814	◆	LIP SEAL	2	220799		●
815		CIRCLIPS	(4)			
816		PLUG	(2)			
817		KEY	(2)			
818		SLEEVE	(1)			●
819	◆	FAN	1	220801		
820	◆	COVER	1	223103		
822		LIP SEAL	(1)			●
823		PLUG	(1)			
824		SCREW	(2)			
825		PIN	(1)			
826		SPACER	(3)			
827	◆	RUBBER RING	3	220803		
828	◆	KEY	1	210995		
830		SCREW	(3)			
831		SPACER	(1)			
832	◆	SHAFT PROTECTOR	1	222835		
834		SEAL WASHER	(3)			
835		SCREW	(3)			
836		SCREW	(4)			
837		SCREW	(6)			
838		WASHER	(10)			
839		SCREW	(1)			
840		SERIAL NUMBER PLATE	(1)			
841		RIVET	(2)			
842		O-RING	(2)			

B1500

* 1, 2,4... : Quantity in equipment - (1), (2), (4)... : Quantity in kit

Item	Available	Description	Qty*	Ref.	Maintenance kit	Wear part
936	◆	REPAIR KIT GEAR_WHEEL_TEETH FOR B1500 20R	1	318748.00		
46		KEY	(1)			
53		SLEEVE	(1)			●
63		CIRCLIPS	(1)			
68		BALL BEARING	(2)			
73		PIN	(1)			
167	◆	MULTIPLIER 20R	1	312134.00		
6		SMALL GEAR	(1)			
7		LARGE GEAR	(1)			
27A		INLET SHAFT	(1)			
31		CIRCLIPS	(1)			
32		SEAL	(1)			
55		KEY	(1)			
1540	◆	CAN OF 7 LITRES (BSC3 OIL)	1	316554.00		●
937	◆	REPAIR KIT GEAR_WHEEL_TEETH FOR B1500 30R	1	318749.00		
46		KEY	(1)			
53		SLEEVE	(1)			●
63		CIRCLIPS	(1)			
68		BALL BEARING	(2)			
73		PIN	(1)			
167	◆	MULTIPLIER 30R	1	312171.00		
6		SMALL GEAR	(1)			
7		LARGE GEAR	(1)			
27A		INLET SHAFT	(1)			
31		CIRCLIPS	(1)			
32		SEAL	(1)			
55		KEY	(1)			
1540	◆	CAN OF 7 LITRES (BSC3 OIL)	1	316554.00		●
938	◆	REPAIR KIT SHAFT_SCREWS FOR B1500	1	318750.00		
14		SET OF SHIMS	(2)			
15		CENTRIFUGATION DISK	(2)			
18		SPACER	(2)			
22		SET OF SHIMS	(1)			
33A		WASHER	(8)			
34		SCREW	(8)			
145	◆	SET OF SCREWS B1500 [PSM]	1	313868.01		
1500		MH6 SLEEVE RH	(1)			
1500A		MH6 SLEEVE RH	(1)			●
1501		RIGHT LIP	(2)			

B1500

* 1, 2,4... : Quantity in equipment - (1), (2), (4)... : Quantity in kit

Item	Available	Description	Qty*	Ref.	Maintenance kit	Wear part
945	◆	B1500 REPAIR KIT LEVEL 1 (NOT ASSEMBLED EXCEPT SCREW KIT) [PSM]	1	318549.00		
7		LARGE GEAR	(1)			
11A		BRONZE SEAL (LEFT)	(1)			
12A		BRONZE SEAL (RIGHT) [PSM]	(1)			
24	◆	ROTOR	1	219140		●
25	◆	PUMP VANE	6	218823		●
26		COVER	(1)			
27A		INLET SHAFT	(1)			
29		BEARING CAP	(1)			
46		KEY	(1)			
53		SLEEVE	(1)			●
59	◆	LIP SEAL	1	215438		●
61		CIRCLIPS	(1)			
63		CIRCLIPS	(1)			
64		CIRCLIPS	(2)			
67		BALL BEARING	(1)			
68		BALL BEARING	(2)			
71		SCREW	(6)			
73		PIN	(1)			
82		CENTRIFUGATION DISK	(2)			
443		O-RING	(2)			
950	◆	SCREW KIT B1500 N 20R ASSEMBLY [PSM]	1	314677.01	■	
6		SMALL GEAR	(1)			
31		CIRCLIPS	(1)			
32		SEAL	(1)			
55		KEY	(1)			
146	◆	GEAR BOX ASSEMBLY B1500 (NOT ASSEMBLED) [PSM]	1	313869.02		
10		BRACKET	(1)			
13		LUBRIFICATION SPACER	(2)			
14		SET OF SHIMS	(2)			
15		CENTRIFUGATION DISK	(2)			
18		SPACER	(2)			
19		BEARING FLANGE	(2)			
20		COVER	(1)			
22		SET OF SHIMS	(1)			
33A		WASHER	(8)			
34		SCREW	(8)			
35		PLUG	(2)			
36		SCREW	(10)			
37		SCREW	(10)			
37C		SCREW	(2)			
39A		SCREW	(8)			
47		KEY	(2)			
51A		PLUG	(1)			
52A		WASHER	(10)			
52C		WASHER	(2)			
56A		SCREW	(3)			
60		BEARING NUT	(2)			
67A		BALL BEARING	(2)			
69		THRUST BALL BEARING	(2)			
84		O-RING	(1)			
145	◆	SET OF SCREWS B1500 [PSM]	1	313868.01		

B1500

* 1, 2, 4... : Quantity in equipment - (1), (2), (4)... : Quantity in kit

Item	Available	Description	Qty*	Ref.	Maintenance kit	Wear part
212	◆	GEAR BOX AND SEALS 11 12 TYPHON II SP B1500 (NOT ASSEMBLED) [PSM]	1	313867.00		
2	◆	GEAR BOX MISTRAL TYPHON II [PSM]	1	212999		
11		BRONZE SEAL (RIGHT) TYPHON II SP	(1)			
12		BRONZE SEAL (LEFT) TYPHON II SP	(1)			
1500		MH6 SLEEVE RH	(1)			
1501		RIGHT LIP	(2)			
1505		MH6 SLEEVE LH	(1)			
189		SYNCHRONIZATION GEARS	(1)			
1200		SEAL	(2)			
1500A		MH6 SLEEVE RH	(1)			●
1501A		RIGHT LIP	(2)			●
1503		BALL BEARING	(1)			
1505A		MH6 SLEEVE LH	(1)			●
1506		CIRCLIPS	(1)			
946	◆	B1500 REPAIR KIT LEVEL 2 (NOT ASSEMBLED) [PSM]	1	318550.00		
10		BRACKET	(1)			
11		BRONZE SEAL (RIGHT) TYPHON II SP	(1)			
11A		BRONZE SEAL (LEFT)	(1)			
12		BRONZE SEAL (LEFT) TYPHON II SP	(1)			
12A		BRONZE SEAL (RIGHT) [PSM]	(1)			
13		LUBRIFICATION SPACER	(2)			
14		SET OF SHIMS	(2)			
15		CENTRIFUGATION DISK	(2)			
18		SPACER	(2)			
19		BEARING FLANGE	(2)			
22		SET OF SHIMS	(1)			
33A		WASHER	(8)			
34		SCREW	(8)			
39A		SCREW	(8)			
47		KEY	(2)			
55		KEY	(1)			
60		BEARING NUT	(2)			
61		CIRCLIPS	(1)			
64		CIRCLIPS	(2)			
82		CENTRIFUGATION DISK	(2)			
145	◆	SET OF SCREWS B1500 [PSM]	1	313868.01		
189		SYNCHRONIZATION GEARS	(1)			
1500		MH6 SLEEVE RH	(1)			
1500A		MH6 SLEEVE RH	(1)			●
1501		RIGHT LIP	(2)			
1501A		RIGHT LIP	(2)			●
1505		MH6 SLEEVE LH	(1)			
1505A		MH6 SLEEVE LH	(1)			●
1506		CIRCLIPS	(1)			
948	◆	BUSHINGS KIT TYPHON II_MISTRAL_B1500 [PSM]	1	319157.00		
11		BRONZE SEAL (RIGHT)	(1)			
11A		BRONZE SEAL (LEFT)	(1)			
12		BRONZE SEAL (LEFT)	(1)			
12A		BRONZE SEAL (RIGHT)	(1)			

B1500

* 1, 2, 4... : Quantity in equipment - (1), (2), (4)... : Quantity in kit

Item	Available	Description	Qty*	Ref.	Maintenance kit	Wear part
950	◆	SCREW KIT B1500 N 20R ASSEMBLY [PSM]	1	314677.01	■	
6		SMALL GEAR	(1)			
31		CIRCLIPS	(1)			
32		SEAL	(1)			
55		KEY	(1)			
146	◆	GEAR BOX ASSEMBLY B1500 (NOT ASSEMBLED) [PSM]	1	313869.02		
10		BRACKET	(1)			
13		LUBRIFICATION SPACER	(2)			
14		SET OF SHIMS	(2)			
15		CENTRIFUGATION DISK	(2)			
18		SPACER	(2)			
19		BEARING FLANGE	(2)			
20		COVER	(1)			
22		SET OF SHIMS	(1)			
33A		WASHER	(8)			
34		SCREW	(8)			
35		PLUG	(2)			
36		SCREW	(10)			
37		SCREW	(10)			
37C		SCREW	(2)			
39A		SCREW	(8)			
47		KEY	(2)			
51A		PLUG	(1)			
52A		WASHER	(10)			
52C		WASHER	(2)			
56A		SCREW	(3)			
60		BEARING NUT	(2)			
67A		BALL BEARING	(2)			
69		THRUST BALL BEARING	(2)			
84		O-RING	(1)			
145	◆	SET OF SCREWS B1500 [PSM]	1	313868.01		
212	◆	GEAR BOX AND SEALS 11 12 TYPHON II SP B1500 (NOT ASSEMBLED) [PSM]	1	313867.00		
2	◆	GEAR BOX MISTRAL TYPHON II [PSM]	1	212999		
11		BRONZE SEAL (RIGHT) TYPHON II SP	(1)			
12		BRONZE SEAL (LEFT) TYPHON II SP	(1)			
1500		MH6 SLEEVE RH	(1)			
1501		RIGHT LIP	(2)			
1505		MH6 SLEEVE LH	(1)			
189		SYNCHRONIZATION GEARS	(1)			
1200		SEAL	(2)			

B1500

* 1, 2, 4... : Quantity in equipment - (1), (2), (4)... : Quantity in kit

Item	Available	Description	Qty*	Ref.	Maintenance kit	Wear part
952	◆	SCREW KIT B1500 N 30R ASSEMBLY [PSM]	1	314681.01	■	
6		SMALL GEAR	(1)			
31		CIRCLIPS	(1)			
32		SEAL	(1)			
55		KEY	(1)			
146	◆	GEAR BOX ASSEMBLY B1500 (NOT ASSEMBLED) [PSM]	1	313869.02		
10		BRACKET	(1)			
13		LUBRIFICATION SPACER	(2)			
14		SET OF SHIMS	(2)			
15		CENTRIFUGATION DISK	(2)			
18		SPACER	(2)			
19		BEARING FLANGE	(2)			
20		COVER	(1)			
22		SET OF SHIMS	(1)			
33A		WASHER	(8)			
34		SCREW	(8)			
35		PLUG	(2)			
36		SCREW	(10)			
37		SCREW	(10)			
37C		SCREW	(2)			
39A		SCREW	(8)			
47		KEY	(2)			
51A		PLUG	(1)			
52A		WASHER	(10)			
52C		WASHER	(2)			
56A		SCREW	(3)			
60		BEARING NUT	(2)			
67A		BALL BEARING	(2)			
69		THRUST BALL BEARING	(2)			
84		O-RING	(1)			
145	◆	SET OF SCREWS B1500 [PSM]	1	313868.01		
212	◆	GEAR BOX AND SEALS 11 12 TYPHON II SP B1500 (NOT ASSEMBLED) [PSM]	1	313867.00		
2	◆	GEAR BOX MISTRAL TYPHON II [PSM]	1	212999		
11		BRONZE SEAL (RIGHT) TYPHON II SP	(1)			
12		BRONZE SEAL (LEFT) TYPHON II SP	(1)			
1500		MH6 SLEEVE RH	(1)			
1501		RIGHT LIP	(2)			
1505		MH6 SLEEVE LH	(1)			
189		SYNCHRONIZATION GEARS	(1)			
1200		SEAL	(2)			

B1500

* 1, 2,4... : Quantity in equipment - (1), (2), (4)... : Quantity in kit

Item	Available	Description	Qty*	Ref.	Maintenance kit	Wear part
954	◆	SERVICE KIT A B1500 (NOT ASSEMBLED) [PSM]	1	314051.01		
6		SMALL GEAR	(1)			
11		BRONZE SEAL (RIGHT) TYPHON II SP	(1)			
11A		BRONZE SEAL (LEFT)	(1)			
12		BRONZE SEAL (LEFT) TYPHON II SP	(1)			
12A		BRONZE SEAL (RIGHT) [PSM]	(1)			
14		SET OF SHIMS	(2)			
18		SPACER	(2)			
22		SET OF SHIMS	(1)			
31		CIRCLIPS	(1)			
55		KEY	(1)			
67		BALL BEARING	(1)			
67A		BALL BEARING	(2)			
68		BALL BEARING	(2)			
69		THRUST BALL BEARING	(2)			
145	◆	SET OF SCREWS B1500 [PSM]	1	313868.01		
443		O-RING	(2)			
1200		SEAL	(2)			
1500		MH6 SLEEVE RH	(1)			
1500A		MH6 SLEEVE RH	(1)			●
1501		RIGHT LIP	(2)			
1501A		RIGHT LIP	(2)			●
1503		BALL BEARING	(1)			
1505		MH6 SLEEVE LH	(1)			
1505A		MH6 SLEEVE LH	(1)			●
955	◆	SERVICE KIT B B1500 (NOT ASSEMBLED) [PSM]	1	313933.00		
6		SMALL GEAR	(1)			
14		SET OF SHIMS	(2)			
22		SET OF SHIMS	(1)			
31		CIRCLIPS	(1)			
55		KEY	(1)			
67		BALL BEARING	(1)			
67A		BALL BEARING	(2)			
68		BALL BEARING	(2)			
69		THRUST BALL BEARING	(2)			
1503		BALL BEARING	(1)			

B1500

* 1, 2, 4... : Quantity in equipment - (1), (2), (4)... : Quantity in kit

Item	Available	Description	Qty*	Ref.	Maintenance kit	Wear part
956	◆	SERVICE KIT C B1500 (NOT ASSEMBLED) [PSM]	1	314389.01		
6		SMALL GEAR	(1)			
11A		BRONZE SEAL (LEFT)	(1)			
12A		BRONZE SEAL (RIGHT) [PSM]	(1)			
14		SET OF SHIMS	(2)			
15		CENTRIFUGATION DISK	(2)			
18		SPACER	(2)			
22		SET OF SHIMS	(1)			
25	◆	PUMP VANE	6	218823		●
28		SEAL	(2)			
30		SEAL WASHER	(1)			
31		CIRCLIPS	(1)			
32		SEAL	(1)			
33A		WASHER	(8)			
34		SCREW	(8)			
37		SCREW	(10)			
41		SEAL	(2)			
42		O-RING	(1)			
46		KEY	(1)			
47		KEY	(2)			
49		SCREW	(6)			
52A		WASHER	(10)			
53		SLEEVE	(1)			●
55		KEY	(1)			
59	◆	LIP SEAL	1	215438		●
63		CIRCLIPS	(1)			
64		CIRCLIPS	(2)			
67		BALL BEARING	(1)			
67A		BALL BEARING	(2)			
68		BALL BEARING	(2)			
69		THRUST BALL BEARING	(2)			
82		CENTRIFUGATION DISK	(2)			
84		O-RING	(1)			
145	◆	SET OF SCREWS B1500 [PSM]	1	313868.01		
189		SYNCHRONIZATION GEARS	(1)			
212	◆	GEAR BOX AND SEALS 11 12 TYPHON II SP B1500 (NOT ASSEMBLED) [PSM]	1	313867.00		
2	◆	GEAR BOX MISTRAL TYPHON II [PSM]	1	212999		
11		BRONZE SEAL (RIGHT) TYPHON II SP	(1)			
12		BRONZE SEAL (LEFT) TYPHON II SP	(1)			
443		O-RING	(2)			
1200		SEAL	(2)			
1500		MH6 SLEEVE RH	(1)			
1500A		MH6 SLEEVE RH	(1)			●
1501		RIGHT LIP	(2)			
1501A		RIGHT LIP	(2)			●
1503		BALL BEARING	(1)			
1505		MH6 SLEEVE LH	(1)			

B1500

* 1, 2,4... : Quantity in equipment - (1), (2), (4)... : Quantity in kit

Item	Available	Description	Qty*	Ref.	Maintenance kit	Wear part
1534	◆	CAN OF 10 LITRES (BSC3 OIL)	1	316304.00		●
1535	◆	CAN OF 30 LITRES (BSC3 OIL)	1	316305.00	■	●
1536	◆	CAN OF 208 LITRES (BSC3 OIL)	1	316492.00		●
1537	◆	CAN OF 1 LITRE (BSC3 OIL)	1	316301.00		●
1538	◆	CAN OF 2 LITRES (BSC3 OIL)	1	316302.00		●
1540	◆	CAN OF 7 LITRES (BSC3 OIL)	1	316554.00		●
1541	◆	CAN OF 8 LITRES (BSC3 OIL)	1	316555.00		●
1562	◆	B1500 SERVICE TOOLS (NOT ASSEMBLED) [PSM]	1	317379.00		
949	◆	TOOL B1500 ASSEMBLING DUMMY [PSM]	1	317349.00		
957	◆	EXTRACTING TOOL FOR 20R GEAR ITEM 6 (MISTRAL_TYPHON_B1500) [PSM]	1	316024.00		
1551	◆	TOOL BRONZE SEAL ASSEMBLING [PSM]	1	231193		
1554	◆	TOOL EXT BEARING GEAR BOX ASSEMBLING [PSM]	1	229075		
1558	◆	TOOL INT BEARING GEAR BOX ASSEMBLING [PSM]	1	229072		
1559A	◆	TOOL STACKING COMPRESSION ADJUSTING MISTRAL TYPHON II B1500 [PSM]	1	317185.00		
1559B	◆	TOOL FACE CLEARANCE GEAR BOX ADJUSTING [PSM]	1	317186.00		
1560	◆	TOOL SCREW LOCK [PSM]	1	317163.00		
1561	◆	TOOL SYNCHRONIZATION GEARS LOCK [PSM]	1	317189.00		
1592	◆	TOOL SYNCHRO GEARS LOCK SETTING [PSM]	1	317187.00		
1601	◆	TOOL TIGHTENING [PSM]	1	231176		
1603	◆	TOOL FILTER INSERT ASSEMBLING [PSM]	1	231174		
1604	◆	TOOL BEARING 68 ASSEMBLING [PSM]	1	231175		
1579	◆	CONVERSION KIT FOR 20R TO 30R (NOT ASSEMBLED)	1	315127.00	■	
46		KEY	(1)			
53		SLEEVE	(1)			●
59	◆	LIP SEAL	1	215438		●
63		CIRCLIPS	(1)			
68		BALL BEARING	(2)			
73		PIN	(1)			
167	◆	MULTIPLIER 30R	1	312171.00		
6		SMALL GEAR	(1)			
7		LARGE GEAR	(1)			
27A		INLET SHAFT	(1)			
31		CIRCLIPS	(1)			
32		SEAL	(1)			
55		KEY	(1)			
1580	◆	CONVERSION KIT FOR 30R TO 20R (NOT ASSEMBLED)	1	315128.00	■	
46		KEY	(1)			
53		SLEEVE	(1)			●
59	◆	LIP SEAL	1	215438		●
63		CIRCLIPS	(1)			
68		BALL BEARING	(2)			
73		PIN	(1)			
167	◆	MULTIPLIER 20R	1	312134.00		
6		SMALL GEAR	(1)			
7		LARGE GEAR	(1)			
27A		INLET SHAFT	(1)			
31		CIRCLIPS	(1)			
32		SEAL	(1)			
55		KEY	(1)			

B1500

* 1, 2,4... : Quantity in equipment - (1), (2), (4)... : Quantity in kit

Item	Available	Description	Qty*	Ref.	Maintenance kit	Wear part
1581	◆	CONVERSION KIT FOR 20R TO 19R_22L (NOT ASSEMBLED)	1	315063.01	■	
6		SMALL GEAR	(1)			
31		CIRCLIPS	(1)			
55		KEY	(1)			
800	◆	MULTIPLIER 19R 22L	1	313964.02	■	
32		SEAL	(1)			
801		BODY	(1)			
802		INLET SHAFT	(2)			
803		BALL BEARING	(4)			
806		GEAR 58 TEETH	(1)			
807		GEAR 50 TEETH	(1)			
808		BALL BEARING	(2)			
809		SECONDARY SHAFT	(1)			
810		SMALL GEAR	(1)			
811		LARGE GEAR	(1)			
813	◆	SLEEVE	2	215763		●
814	◆	LIP SEAL	2	220799		●
815		CIRCLIPS	(4)			
816		PLUG	(2)			
817		KEY	(2)			
818		SLEEVE	(1)			●
819	◆	FAN	1	220801		
820	◆	COVER	1	223103		
822		LIP SEAL	(1)			●
823		PLUG	(1)			
824		SCREW	(2)			
825		PIN	(1)			
826		SPACER	(3)			
827	◆	RUBBER RING	3	220803		
828	◆	KEY	1	210995		
830		SCREW	(3)			
831		SPACER	(1)			
832	◆	SHAFT PROTECTOR	1	222835		
834		SEAL WASHER	(3)			
835		SCREW	(3)			
836		SCREW	(4)			
837		SCREW	(6)			
838		WASHER	(10)			
839		SCREW	(1)			
840		SERIAL NUMBER PLATE	(1)			
841		RIVET	(2)			
842		O-RING	(2)			
1879	◆	SEALS_SCREWS KIT FOR CHECK VALVE (NOT ASSEMBLED)	1	314413.00	■	
759		SEAL WASHER	(1)			
1816	◆	GASKET	2	220562	■	
1818		WASHER	(4)			
1821		NUT	(4)			
1823		SCREW	(4)			
1880	◆	SEALING KIT FOR CHECK VALVE (NOT ASSEMBLED)	1	314412.00	■	
1805		SPRING	(1)			
1807		WASHER	(1)			
1808		BUSH	(1)			
1812		SEAL	(1)			
1819		CIRCLIPS	(1)			