

## **PARTS LIST**

### **PUMP**

### **A55 A**

Keep this parts lists with Installation, Operation and Maintenance Instructions.

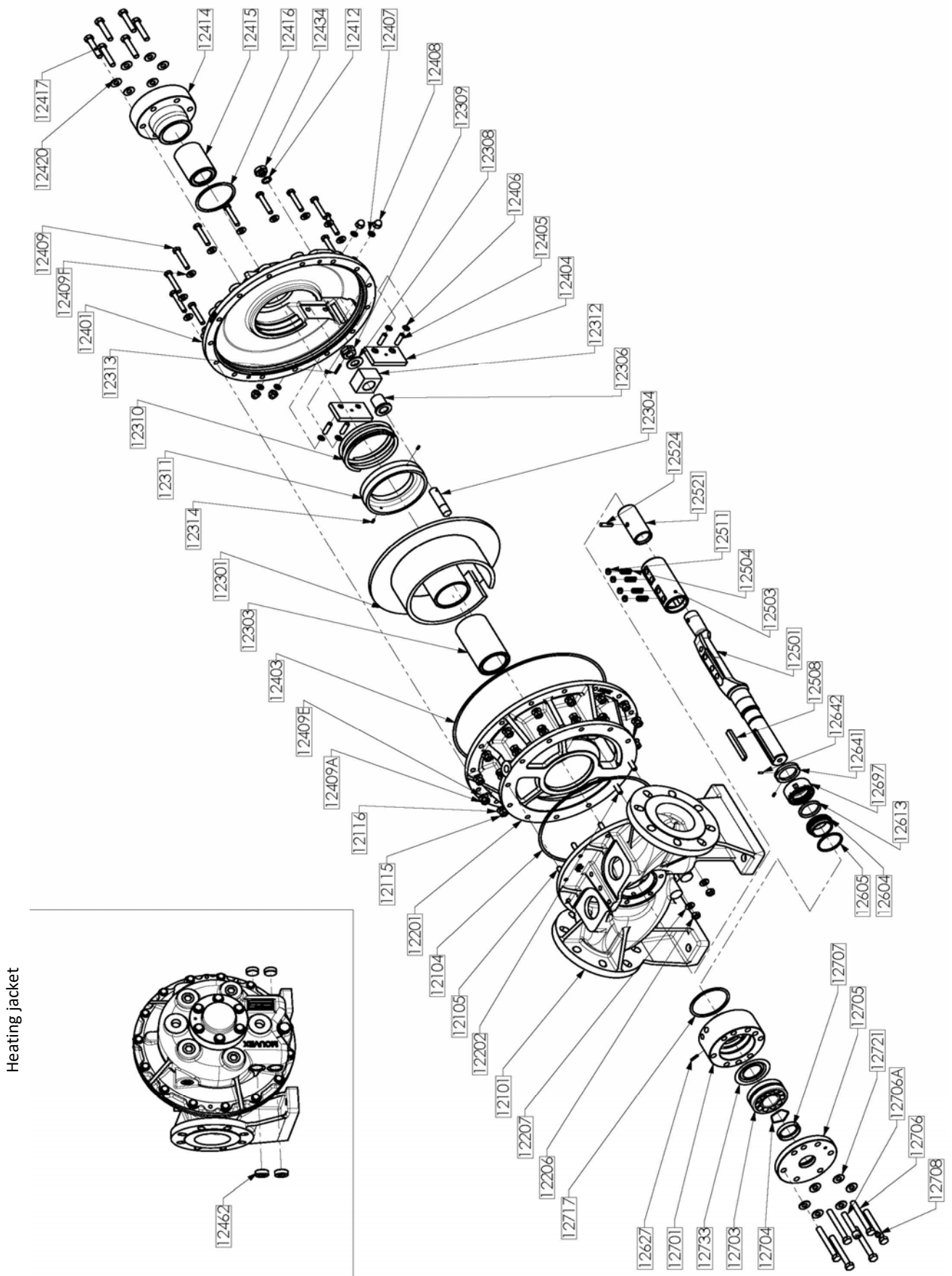
To order the required spare parts, indicate the desired Reference(s).

- ◆ Sets of parts or parts available to order.

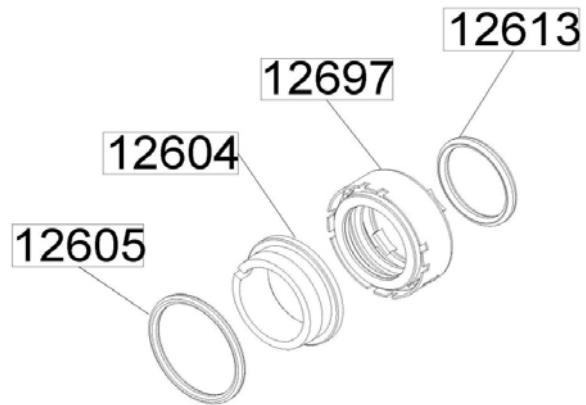
Z.I. la Plaine des Isles - 2 rue des Caillottes F-89000 AUXERRE - France

Tel : +33 (0)3 86 49 86 30 • Fax : +33 (0)3 86 49 87 17  
contact.mouvex@psgdover.com • www.mouvex.com

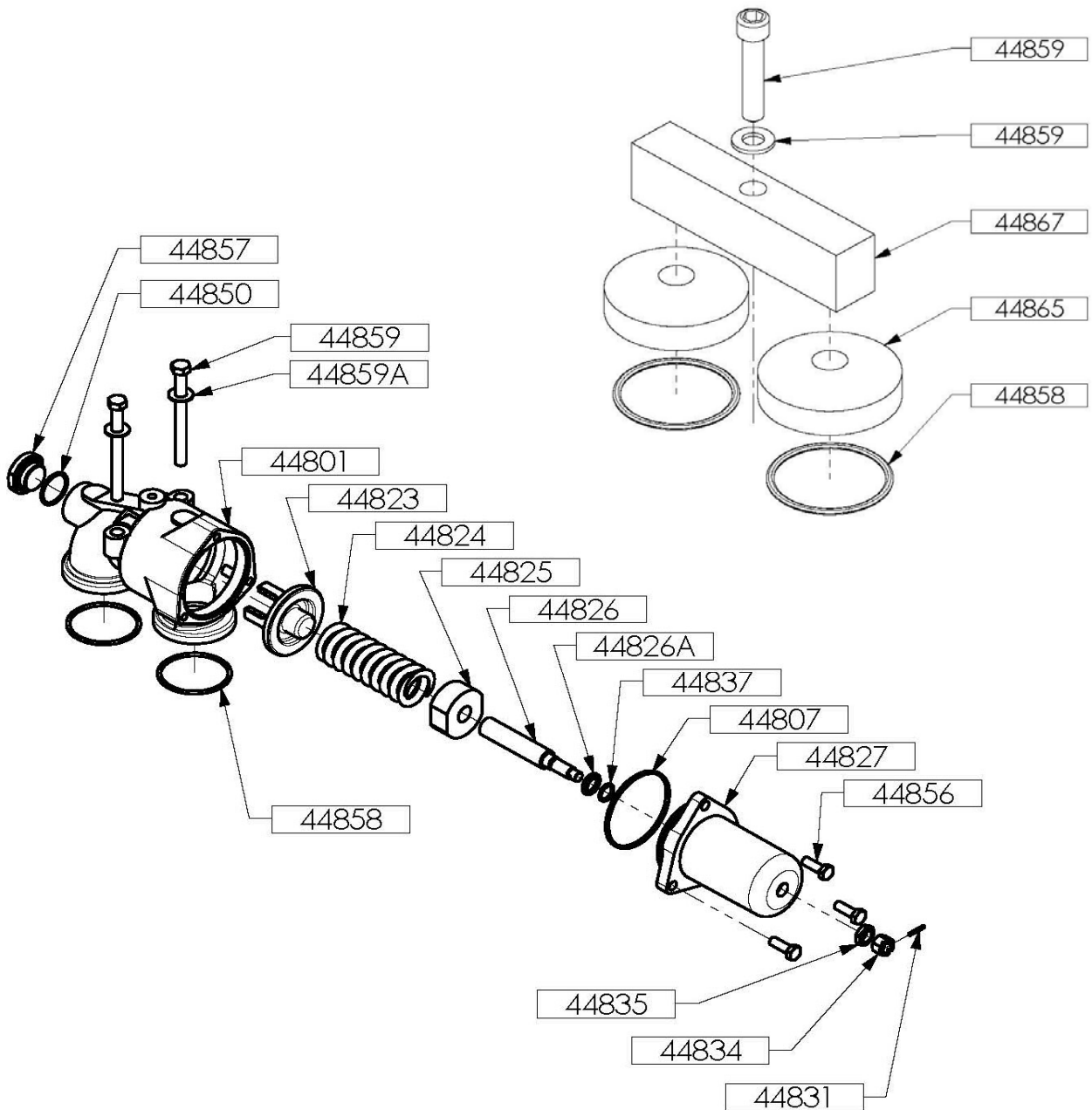
# A55 A



## Mechanical seal



## Bypass & Stirrup



# A55 A

\* 1, 2, 4... : Quantity in equipment - (1), (2), (4)... : Quantity in kit

Item	Available	Description	Qty*	Ref.	Maintenance kit	Wear part
12097	◆	SET OF SCREWS-SEALS (PISTON INSPECTION) - FEP-FKM	1	AUX317063	■	
12097	◆	SET OF SCREWS-SEALS (PISTON INSPECTION) - FKM	1	AUX317062	■	
12403	◆	O-RING - FKM	1	AUX227818		●
12403	◆	O-RING - FEP-FKM	1	AUX227819		●
12409		SCREW	(15)			
12409A		NUT	(15)			
12409E		WASHER	(15)			
12409F		WASHER	(15)			
12412		SEAL	(1)			●
12524		PIN	(1)			
12098	◆	FULL SET OF SCREWS	1	AUX317064		
12105		STUD	(10)			
12115		NUT	(10)			
12116		WASHER	(10)			
12207		WASHER	(2)			
12409		SCREW	(15)			
12409A		NUT	(15)			
12409E		WASHER	(15)			
12409F		WASHER	(15)			
12417		SCREW	(6)			
12420		WASHER	(6)			
12706		SCREW	(6)			
12706A		SCREW	(1)			
12721		WASHER	(6)			
12099	◆	SET OF FEP-FKM 'O' RING SEALS	1	AUX317066	■	
12099	◆	SET OF FKM 'O' RING SEALS	1	AUX317065	■	
12104		SEAL	(1)			●
12403	◆	O-RING - FKM	1	AUX227818		●
12403	◆	O-RING - FEP-FKM	1	AUX227819		●
12406		SEAL	(4)			●
12416		SEAL	(1)			●
12717		SEAL	(1)			●
12100	◆	MAIN BODY WITH FLANGES COMPATIBLE WITH OLD A SERIES, COMPLETE	1	AUX314592		
12100	◆	MAIN BODY PN16 PN20, COMPLETE	1	AUX314591		
12101		MAIN BODY	(1)			
12105		STUD	(10)			
12200	◆	CYLINDER, COMPLETE - FEP-FKM	1	AUX315146	■	
12200	◆	CYLINDER, COMPLETE - FKM	1	AUX315145	■	
12104		SEAL	(1)			●
12115		NUT	(10)			
12116		WASHER	(10)			
12201		CYLINDER	(1)			●
12202		STUD	(2)			
12206		NUT	(2)			
12207		WASHER	(2)			

# A55 A

\* 1, 2, 4... : Quantity in equipment - (1), (2), (4)... : Quantity in kit

Item	Available	Description	Qty*	Ref.	Maintenance kit	Wear part
12300	◆	COMPLETE PISTON - BRONZE BUSHING	1	AUX317067	■	
12300	◆	COMPLETE PISTON - CARBON BUSHING	1	AUX315237	■	
123010		PISTON + BLOCK PIN	(1)			●
12301		PISTON	(1)			●
12304	◆	SLIDE BLOCK SHAFT	1	AUX203917		●
12303	◆	PISTON BUSHING (CARBON)	1	AUX319229		●
12303	◆	PISTON BUSHING (BRONZE)	1	AUX231075		●
123980	◆	SLIDE BLOCK, COMPLETE	1	AUX317090		
12307	◆	SLIDE BLOCK + PIN + BUSHING	1	AUX317091		
12306		BUSHING	(1)			●
12312		SLIDE BLOCK	(1)			●
12313		PIN	(1)			
12308		WASHER	(1)			
12309		NUT	(1)			
12400	◆	COMPLETE FRONT COVER - FEP-FKM	1	AUX315389		
12400	◆	COMPLETE FRONT COVER - FKM	1	AUX315388		
12400	◆	COMPLETE FRONT COVER WITH JACKET - FEP-FKM	1	AUX315545		
12400	◆	COMPLETE FRONT COVER WITH JACKET - FKM	1	AUX315544		
12399	◆	PUSHER, COMPLETE	1	AUX315614		
12310		SPRING	(1)			
12311		PUSHER	(1)			
12314		PIN	(2)			
12401		FRONT COVER	(1)			
12402	◆	SLIDE BLOCK PADS SET COMPLETE - FEP-FKM	1	AUX315419		
12402	◆	SLIDE BLOCK PADS SET COMPLETE - FKM	1	AUX315418		
12404		GUIDE	(2)			
12405		STUD	(4)			
12406		SEAL	(4)			●
12407		SEAL	(4)			●
12408		BLIND NUT	(4)			
12403	◆	O-RING - FKM	1	AUX227818		●
12403	◆	O-RING - FEP-FKM	1	AUX227819		●
12409		SCREW	(15)			
12409A		NUT	(15)			
12409E		WASHER	(15)			
12409F		WASHER	(15)			
12411	◆	FRONT COVER DRAIN PLUG + SEAL	1	AUX316444		
12412		SEAL	(1)			●
12434		PLUG	(1)			
12462		PLUG (FOR HEATING JACKET)	(4)			
44808		BYPASS ORIENTATION PLATE	(1)			
44809		PIN	(2)			
12413	◆	FRONT COVER BEARING COMPLETE - BRONZE BUSHING - FEP-FKM	1	AUX317069		
12413	◆	FRONT COVER BEARING COMPLETE - BRONZE BUSHING - FKM	1	AUX317068		
12413	◆	FRONT COVER BEARING COMPLETE - CARBON BUSHING - FEP-FKM	1	AUX315547		
12413	◆	FRONT COVER BEARING COMPLETE - CARBON BUSHING - FKM	1	AUX315546		
12414		FRONT COVER BEARING	(1)			
12415	◆	BEARING BUSHING - CARBON	1	AUX314590		●
12415	◆	BEARING BUSHING - BRONZE	1	AUX231076		●
12416		SEAL	(1)			●
12417		SCREW	(6)			
12420		WASHER	(6)			

# A55 A

\* 1, 2, 4... : Quantity in equipment - (1), (2), (4)... : Quantity in kit

Item	Available	Description	Qty*	Ref.	Maintenance kit	Wear part
<b>12500</b>	◆	<b>SHAFT COMPLETE</b>	1	<b>AUX317070</b>		
12501	◆	SHAFT	1	AUX228618		
12508	◆	KEY	1	AUX203859		
12515	◆	COMPLETE SLEEVE	1	AUX317087		
12521		SLEEVE	(1)			
12524		PIN	(1)			
12598	◆	PISTON BEARING, COMPLETE	1	AUX317086		
12503		PISTON BEARING	(1)			●
12504		SPRING	(4)			
12511		SCREW	(4)			
<b>12600A *</b>	◆	<b>MECHANICAL SEAL - MS C_S_FEP-FKM D45</b>	1	<b>AUX317071</b>	■	
<b>12600A *</b>	◆	<b>MECHANICAL SEAL - MS C_S_FKM D45</b>	1	<b>AUX316403</b>	■	
<b>12600A *</b>	◆	<b>MECHANICAL SEAL - MS T_T_FEP-FKM D45</b>	1	<b>AUX317072</b>	■	
<b>12600A *</b>	◆	<b>MECHANICAL SEAL - MS T_T_FKM D45</b>	1	<b>AUX316159</b>	■	
12604		STATIONARY SEAL FACE	(1)			●
12619		BUSHING FOR FEP-FKM MECHANICAL SEAL	(1)			
12640	◆	DRIVER, COMPLETE D45 (FOR MOUVEX MECHANICAL SEAL)	1	AUX315934		
12641		DRIVER	(1)			
12642		SCREW	(2)			
12697		ROTATING PART	(1)			●
12699	◆	SET OF MECHANICAL SEAL SEALS - FEP-FKM	1	AUX316544		
12699	◆	SET OF MECHANICAL SEAL SEALS - FKM	1	AUX316543		
12605		O-RING	(1)			●
12613		SEAL	(1)			●
<b>12600B</b>	◆	<b>SHAFT SEALS STANDARDIZED IN ACCORDANCE M7N_45 C CSSF</b>	1	<b>AUX316650</b>	■	●
<b>12600B</b>	◆	<b>SHAFT SEALS STANDARDIZED IN ACCORDANCE M7N_45 C CSCSF</b>	1	<b>AUX316652</b>	■	●
<b>12600B</b>	◆	<b>SHAFT SEALS STANDARDIZED IN ACCORDANCE M7N_45 C CSSP</b>	1	<b>AUX319793</b>	■	●
<b>12600B</b>	◆	<b>SHAFT SEALS STANDARDIZED IN ACCORDANCE M7N_45 C CSCSP</b>	1	<b>AUX319794</b>	■	●
<b>12700</b>	◆	<b>BEARING HOLDER PGSN - FEP-FKM</b>	1	<b>AUX315549</b>		
<b>12700</b>	◆	<b>BEARING HOLDER PGSN - FKM</b>	1	<b>AUX315548</b>		
12627	◆	PIN	1	AUX200125		
12701		BEARING CAGE	(1)			
12703A	◆	BEARING & RING	1	AUX315899		
12703		BEARING	(1)			●
12733		NILOS RING	(1)			
12705		BEARING COVER	(1)			
12708		GREASE NIPPLE	(1)			
12797	◆	BEARING SCREWS AND GASKET SET - FEP-FKM	1	AUX316542	■	
12797	◆	BEARING SCREWS AND GASKET SET - FKM	1	AUX316541	■	
12704		RING	(1)			
12706		SCREW	(6)			
12706A		SCREW	(1)			
12707		LIP SEAL	(1)			
12717		SEAL	(1)			●
12721		WASHER	(6)			

\* MS : Mouvex Seal T : Tungsten carbide C : Carbon S : Stainless steel

# A55 A

\* 1, 2, 4... : Quantity in equipment - (1), (2), (4)... : Quantity in kit

Item	Available	Description	Qty*	Ref.	Maintenance kit	Wear part
12820	◆	SINGLE RELIEF VALVE, COMPLETE - C12 - FEP-FKM	1	AUX319764		
12820	◆	SINGLE RELIEF VALVE, COMPLETE - C12 - FKM	1	AUX319765		
12820	◆	SINGLE RELIEF VALVE, COMPLETE - C3 - FEP-FKM	1	AUX319766		
12820	◆	SINGLE RELIEF VALVE, COMPLETE - C3 - FKM	1	AUX319767		
12820	◆	SINGLE RELIEF VALVE, COMPLETE - C6 - FEP-FKM	1	AUX319768		
12820	◆	SINGLE RELIEF VALVE, COMPLETE - C6 - FKM	1	AUX319769		
44801		BYPASS BODY	(1)			
44823		VALVE	(1)			
44824	◆	3 BAR SPRING	1	AUX216012		
44824	◆	6 BAR SPRING	1	AUX216013		
44824	◆	12 BAR SPRING	1	AUX219067		
44827	◆	INTERNAL RELIEF VALVE CAP	1	AUX239277		
44856		SCREW	(3)			
44857		PLUG	(1)			
44859		SCREW	(2)			
44859A		WASHER	(2)			
44898		PRESSURE SCREW ASSEMBLY	(1)			
44825		SPRING BASE	(1)			
44826		ADJUSTING SCREW	(1)			
44826A		WASHER	(1)			
44831		PIN	(1)			
44834		NUT	(1)			
44835		NUT	(1)			
44899	◆	SET OF SEALS FOR RELIEF VALVE C - FEP-FKM	1	AUX316595		
44899	◆	SET OF SEALS FOR RELIEF VALVE C - FKM	1	AUX316594		
44807		SEAL	(1)			●
44837		SEAL	(1)			●
44850		SEAL	(1)			●
44858	◆	SEAL FEP-FKM	2	AUX211442		●
44858	◆	SEAL FKM	2	AUX200912		●

# A55 A

\* 1, 2, 4... : Quantity in equipment - (1), (2), (4)... : Quantity in kit

Item	Available	Description	Qty*	Ref.	Maintenance kit	Wear part
12820A	◆	DOUBLE RELIEF VALVE, COMPLETE - C12 - FEP-FKM	1	AUX319770		
12820A	◆	DOUBLE RELIEF VALVE, COMPLETE - C12 - FKM	1	AUX319771		
12820A	◆	DOUBLE RELIEF VALVE, COMPLETE - C3 - FEP-FKM	1	AUX319772		
12820A	◆	DOUBLE RELIEF VALVE, COMPLETE - C3 - FKM	1	AUX319773		
12820A	◆	DOUBLE RELIEF VALVE, COMPLETE - C6 - FEP-FKM	1	AUX319774		
12820A	◆	DOUBLE RELIEF VALVE, COMPLETE - C6 - FKM	1	AUX319775		
44801		BYPASS BODY	(1)			
44822		VALVE SEAT	(2)			
44823		VALVE	(2)			
44824	◆	3 BAR SPRING	2	AUX216012		
44824	◆	6 BAR SPRING	2	AUX216013		
44824	◆	12 BAR SPRING	2	AUX219067		
44827	◆	INTERNAL RELIEF VALVE CAP	2	AUX239277		
44856		SCREW	(6)			
44857		PLUG	(2)			
44859		SCREW	(2)			
44859A		WASHER	(2)			
44892		SCREW	(2)			
44893		SEAL	(2)			
44898		PRESSURE SCREW ASSEMBLY	(2)			
44825		SPRING BASE	(1)			
44826		ADJUSTING SCREW	(1)			
44826A		WASHER	(1)			
44831		PIN	(1)			
44834		NUT	(1)			
44835		NUT	(1)			
44899	◆	SET OF SEALS FOR RELIEF VALVE 2C - FEP-FKM	1	AUX316706		
44899	◆	SET OF SEALS FOR RELIEF VALVE 2C - FKM	1	AUX316705		
44807		SEAL	(2)			●
44837		SEAL	(2)			●
44850		SEAL	(2)			●
44858	◆	SEAL FEP-FKM	2	AUX211442		●
44858	◆	SEAL FKM	2	AUX200912		●



# A55 A

\* 1, 2, 4... : Quantity in equipment - (1), (2), (4)... : Quantity in kit

Item	Available	Description	Qty*	Ref.	Maintenance kit	Wear part
44824B	◆	COMPLETE SPRING + SEAL - RELIEF VALVE 10 BAR - FEP-FKM	1/2	AUX317078		
44824B	◆	COMPLETE SPRING + SEAL - RELIEF VALVE 10 BAR - FKM	1/2	AUX317075		
44824B	◆	COMPLETE SPRING + SEAL - RELIEF VALVE 3 BAR - FEP-FKM	1/2	AUX317076		
44824B	◆	COMPLETE SPRING + SEAL - RELIEF VALVE 3 BAR - FKM	1/2	AUX317073		
44824B	◆	SPRING + SEAL - RELIEF VALVE 6 BAR - FEP-FKM	1/2	AUX317077		
44824B	◆	SPRING + SEAL - RELIEF VALVE 6 BAR - FKM	1/2	AUX317074		
44807		SEAL	(1)			●
44824		SPRING	(1)			
44898B	◆	PRESSURE SCREW ASSEMBLY + RELIEF VALVE SEALS - FEP-FKM	1/2	AUX319776		
44898B	◆	PRESSURE SCREW ASSEMBLY + RELIEF VALVE SEALS - FKM	1/2	AUX319777		
44807		SEAL	(1)			●
44837		SEAL	(1)			●
44898		PRESSURE SCREW ASSEMBLY	(1)			
44825		SPRING BASE	(1)			
44826		ADJUSTING SCREW	(1)			
44826A		WASHER	(1)			
44831		PIN	(1)			
44834		NUT	(1)			
44835		NUT	(1)			
12849	◆	COMPLETE STIRRUP - FEP-FKM	1	AUX316709		
12849	◆	COMPLETE STIRRUP - FKM	1	AUX316708		
44858	◆	SEAL FEP-FKM	2	AUX211442		●
44858	◆	SEAL FKM	2	AUX200912		●
44859		SCREW	(1)			
44859A		WASHER	(1)			
44865		PLUG	(2)			
44867		STIRRUP	(1)			