



P.L. : 1013-D02

Effective  
Replaces

June 2023  
New

**PARTS LIST**  
**PUMPS**  
**G-FLO 6 S - G-FLO 8 S**

Keep this parts lists with Installation, Operation and Maintenance Instructions.

To order the required spare parts, indicate the desired Reference(s).

- ◆ Sets of parts or parts available to order.

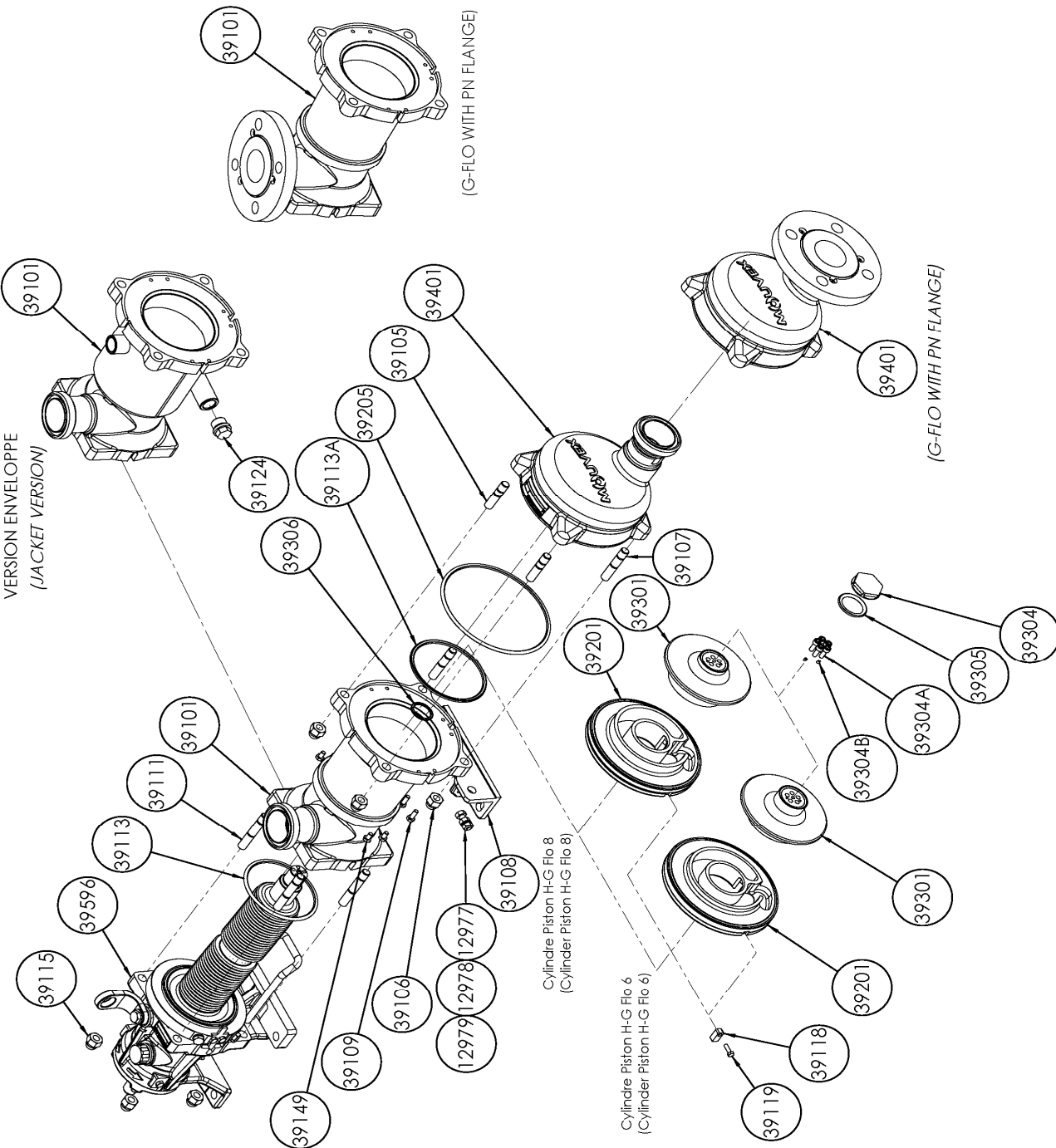
CVT : FEP encapsulated FKM

Z.I. la Plaine des Isles - 2 rue des Caillottes F-89000 AUXERRE - France

Tel : +33 (0)3 86 49 86 30 • Fax : +33 (0)3 86 49 87 17  
contact.mouvex@psgdover.com • www.mouvex.com

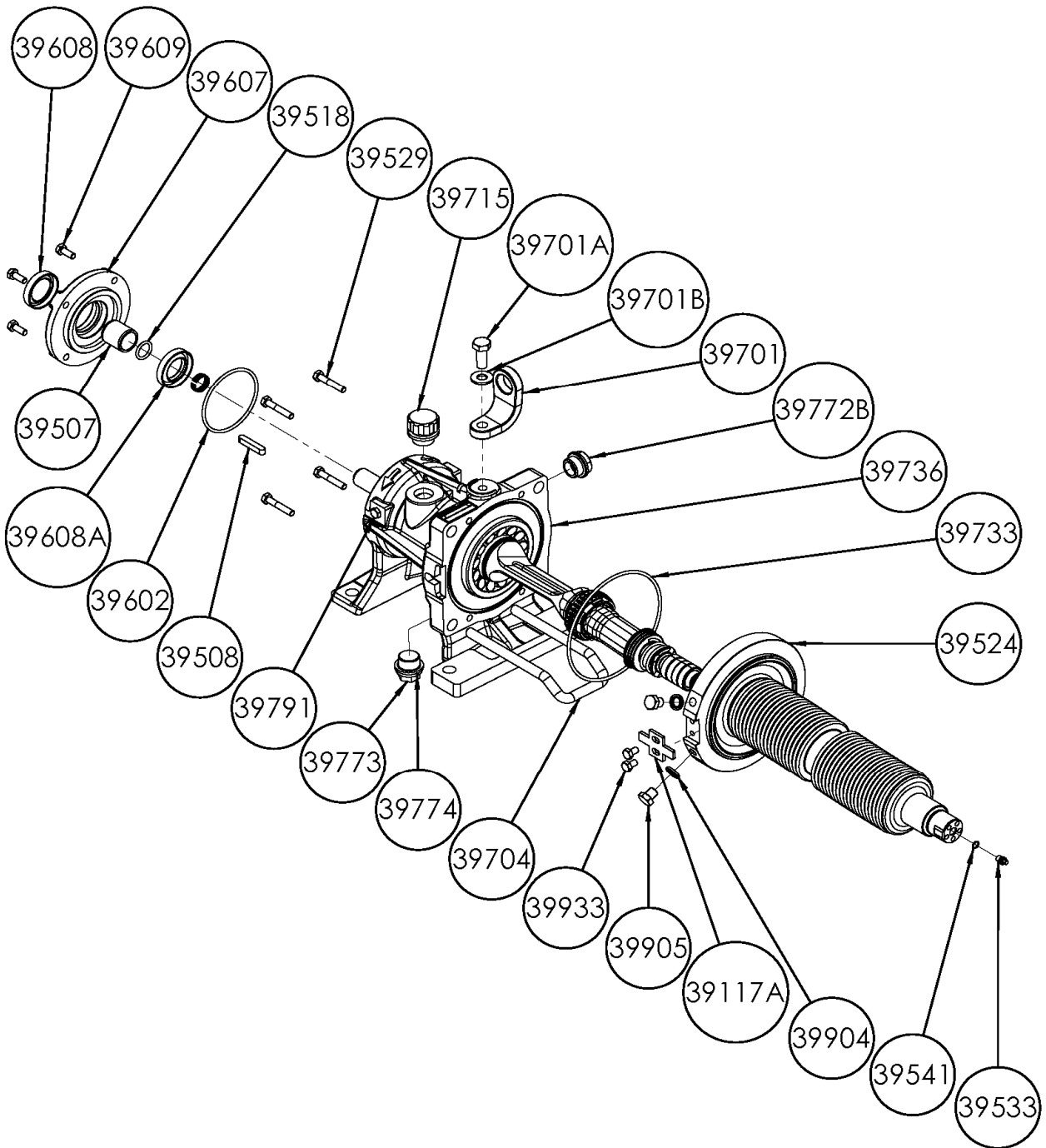
# G-FLO 6 S - G-FLO 8 S

## Standard & Jacketed pump



# G-FLO 6 S - G-FLO 8 S

## Transmission



## G-FLO 6 S - G-FLO 8 S

\* 1, 2, 4... : Quantity in equipment - (1), (2), (4)... : Quantity in kit

Item	Available	Description	Qty*	Ref.	Maintenance kit	Wear part
39100	◆	MAIN BODY G FLO 6_8 S	1	AUX321665		
39100	◆	JACKETED MAIN BODY G FLO 6_8 S	1	AUX321677		
39101		MAIN BODY	(1)			
39108		FOOT	(1)			
39109		SCREW	(2)			
39124		PLUG (JACKETED PUMP)	(1)			
39110	◆	SCREWS SET FOR MAIN BODY_FRONT COVER G_H FLO 6_8 S	1	AUX321691		
39105		STUD	(2)			
39106		BLIND NUT	(4)			
39107		STUD	(2)			
39111		STUD	(4)			
39115		BLIND NUT	(4)			
39149		SCREW	(4)			
39410	◆	KIT FLANGES MAIN BODY_FRONT COVER PN16 DN50	1	AUX321692		
39410	◆	KIT FLANGES MAIN BODY_FRONT COVER PN20 DN50	1	AUX321693		
39136		SCREW	(6)			
39148		ROD	(2)			
39414		FLANGE	(2)			
39200	◆	SET CYLINDER_PISTON G_H FLO 6 S	1	AUX321641	■	
39200	◆	SET CYLINDER_PISTON G_H FLO 8 S	1	AUX321642	■	
39118		INDEXER	(1)			
39119		SCREW	(1)			
39201		CYLINDER	(1)			●
39301		PISTON	(1)			●
39304	◆	PISTON NUT G_H FLO 6_8 S	1	AUX244083		●
39304A		SCREW	(5)			
39304B		SCREW	(2)			
39206	◆	SET OF CVT CE1935/2004 'O' RING SEALS G_H FLO 6_8 S	1	AUX321689	■	
39206	◆	SET OF EPDM CE1935/2004 'O' RING SEALS G_H FLO 6_8 S	1	AUX321690	■	
39206	◆	SET OF FKM CE1935/2004 'O' RING SEALS G_H FLO 6_8 S	1	AUX321688	■	
39113		SEAL	(1)			●
39113A		SEAL	(1)			●
39205		SEAL	(1)			●
39305		SEAL	(1)			●
39306		SEAL	(1)			●
39401	◆	FRONT COVER COMPLETE G FLO 6_8 S	1	AUX321648		
		<b>G FLO 6_8 S COMPLETE TRANSMISSION :</b>				
		<b>STANDARD</b>				
39596	◆	STANDARD	1	AUX321717	■	●
39596*	◆	STANDARD_ECS	1	AUX321720	■	●
39596*	◆	STANDARD_ECS_OIL LEVEL SENSOR	1	AUX321721	■	●
39596*	◆	STANDARD_ATEX_ECS_OIL LEVEL SENSOR	1	AUX321722	■	●
		<b>WITH BELLOWS MONITORING SYSTEM (BMS)</b>				
39596*	◆	BMS	1	AUX321718	■	●
39596*	◆	BMS_ECS	1	AUX321723	■	●
39596*	◆	BMS_ECS_OIL LEVEL SENSOR	1	AUX321724	■	●
		<b>WITH BELLOWS MONITORING SYSTEM (BMS) ATEX</b>				
39596*	◆	BMS ATEX	1	AUX321719	■	●
39596*	◆	BMS ATEX_ECS	1	AUX321725	■	●
39596*	◆	BMS ATEX_ECS_OIL LEVEL SENSOR	1	AUX321726	■	●
39009A**	◆	BEARING GASKETS_RINGS SET G_H FLO 6_8 S	1	AUX321715		
39498		BUSHING	(1)			
39507		SEAL RING	(1)			●
39518		SEAL	(1)			●
39602		SEAL	(1)			
39608		LIP SEAL	(1)			●
39608A		LIP SEAL	(1)			●

\* ECS : EASY CLEAN SYSTEM - BMS : BELLOWS MONITORING SYSTEM

\*\* Only for Agreed distributors