



P.L. : 1013-H02

Effective
Replaces

June 2023
New

PARTS LIST
PUMPS
H-FLO 6 S - H-FLO 8 S

Keep this parts lists with Installation, Operation and Maintenance Instructions.

To order the required spare parts, indicate the desired Reference(s).

- ◆ Sets of parts or parts available to order.

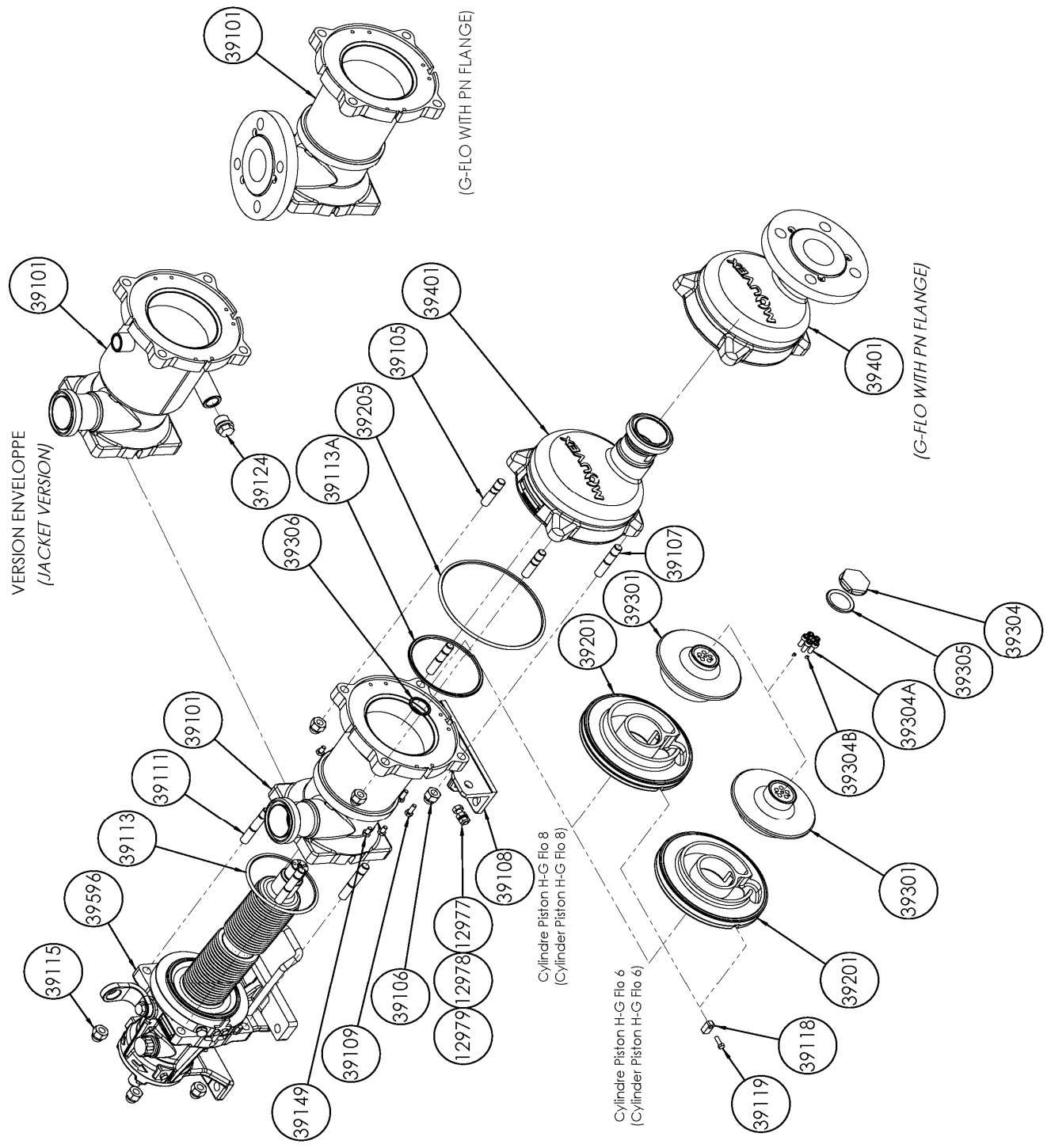
CVT : FEP encapsulated FKM

Z.I. la Plaine des Isles - 2 rue des Caillottes F-89000 AUXERRE - France

Tel : +33 (0)3 86 49 86 30 • Fax : +33 (0)3 86 49 87 17
contact.mouvex@psgdover.com • www.mouvex.com

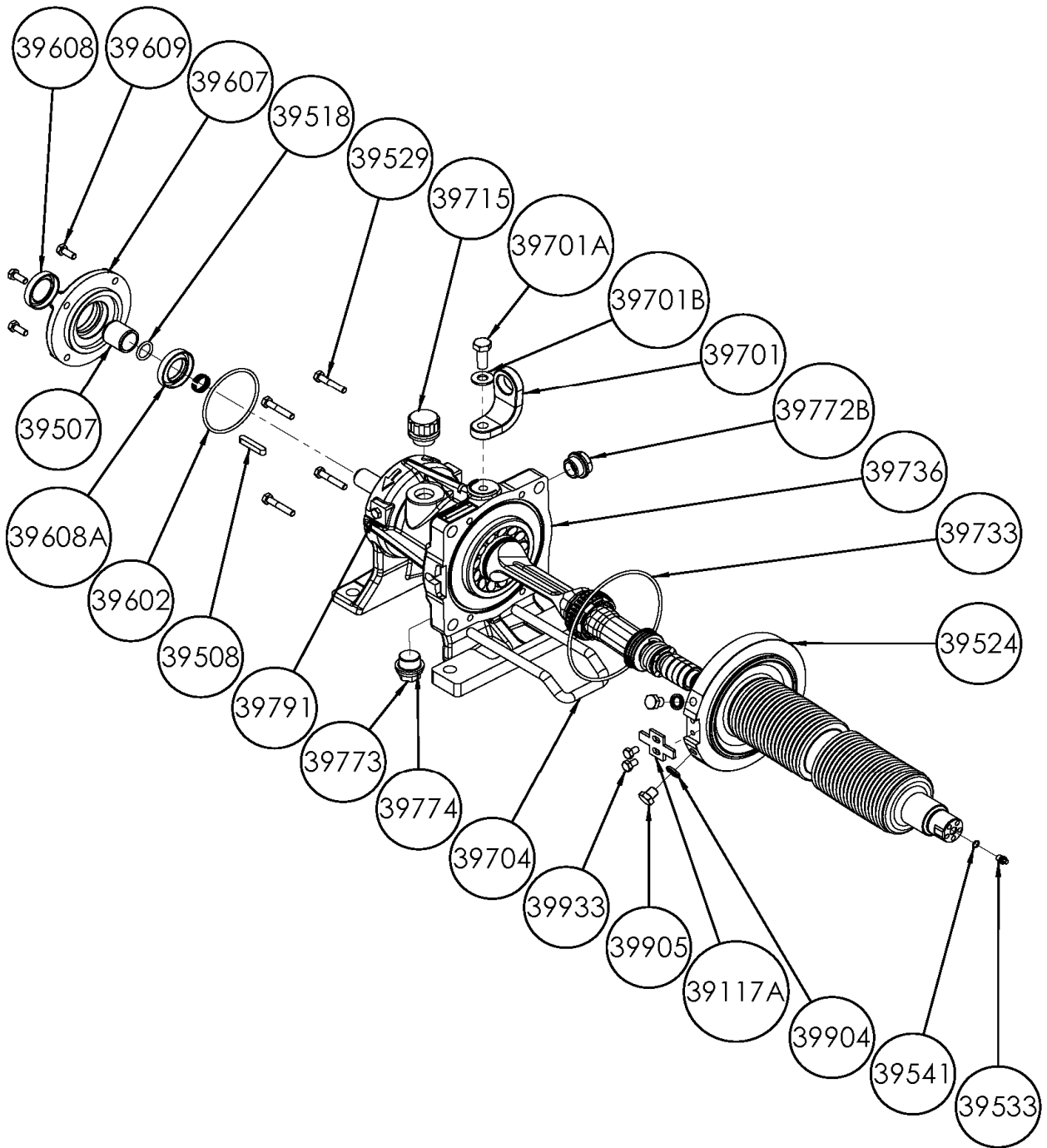
H-FLO 6 S - H-FLO 8 S

Standard & Jacketed pump



H-FLO 6 S - H-FLO 8 S

Transmission



H-FLO 6 S - H-FLO 8 S

* 1, 2, 4... : Quantity in equipment - (1), (2), (4)... : Quantity in kit

Item	Available	Description	Qty*	Ref.	Maintenance kit	Wear part
39100	◆	MAIN BODY H FLO 6_8 - CONNECTIONS CLAMP ASME-BPE	1	AUX321662		
39100	◆	MAIN BODY H FLO 6_8 - CONNECTIONS CLAMP ISO 2852	1	AUX321663		
39100	◆	MAIN BODY H FLO 6_8 - CONNECTIONS DIN 11851	1	AUX321661		
39100	◆	MAIN BODY H FLO 6_8 - CONNECTIONS SMS	1	AUX321660		
39100	◆	MAIN BODY H FLO 6_8 - CONNECTIONS DIN 11864	1	AUX321664		
39100	◆	JACKETED MAIN BODY H FLO 6_8 - CONNECTIONS CLAMP ASME-BPE	1	AUX321674		
39100	◆	JACKETED MAIN BODY H FLO 6_8 - CONNECTIONS CLAMP ISO 2852	1	AUX321675		
39100	◆	JACKETED MAIN BODY H FLO 6_8 - CONNECTIONS DIN 11851	1	AUX321673		
39100	◆	JACKETED MAIN BODY H FLO 6_8 - CONNECTIONS SMS	1	AUX321672		
39100	◆	JACKETED MAIN BODY H FLO 6_8 - CONNECTIONS DIN 11864	1	AUX321676		
39100	◆	POLISH MAIN BODY H FLO 6_8 - CONNECTIONS CLAMP ASME-BPE	1	AUX321685		
39100	◆	POLISH MAIN BODY H FLO 6_8 - CONNECTIONS CLAMP ISO 2852	1	AUX321686		
39100	◆	POLISH MAIN BODY H FLO 6_8 - CONNECTIONS DIN 11851	1	AUX321684		
39100	◆	POLISH MAIN BODY H FLO 6_8 - CONNECTIONS SMS	1	AUX321683		
39100	◆	POLISH MAIN BODY H FLO 6_8 - CONNECTIONS DIN 11864	1	AUX321687		
39101		MAIN BODY	(1)			
39108		FOOT	(1)			
39109		SCREW	(2)			
39124		PLUG (JACKETED PUMP)	(1)			
39110	◆	SCREWS SET FOR MAIN BODY_FRONT COVER G_H FLO 6_8 S	1	AUX321691		
39105		STUD	(2)			
39106		BLIND NUT	(4)			
39107		STUD	(2)			
39111		STUD	(4)			
39115		BLIND NUT	(4)			
39149		SCREW	(4)			
39200	◆	SET CYLINDER_PISTON G_H FLO 6 S	1	AUX321641	■	
39200	◆	SET CYLINDER_PISTON G_H FLO 8 S	1	AUX321642	■	
39118		INDEXER	(1)			
39119		SCREW	(1)			
39201		CYLINDER	(1)			●
39301		PISTON	(1)			●
39304	◆	PISTON NUT G_H FLO 6_8 S	1	AUX244083		●
39304A		SCREW	(5)			
39304B		SCREW	(2)			
39206	◆	SET OF CVT CE1935/2004 'O' RING SEALS G_H FLO 6_8 S	1	AUX321689	■	
39206	◆	SET OF EPDM CE1935/2004 'O' RING SEALS G_H FLO 6_8 S	1	AUX321690	■	
39206	◆	SET OF FKM CE1935/2004 'O' RING SEALS G_H FLO 6_8 S	1	AUX321688	■	
39113		SEAL	(1)			●
39113A		SEAL	(1)			●
39205		SEAL	(1)			●
39305		SEAL	(1)			●
39306		SEAL	(1)			●
39401	◆	FRONT COVER H FLO 6_8 - CONNECTION CLAMP ASME BPE-2009	1	AUX321645		
39401	◆	FRONT COVER H FLO 6_8 - CONNECTION DIN11864	1	AUX321647		
39401	◆	FRONT COVER H FLO 6_8 - CONNECTION CLAMP ISO 2852	1	AUX321646		
39401	◆	FRONT COVER H FLO 6_8 - CONNECTION DIN11851	1	AUX321644		
39401	◆	FRONT COVER H FLO 6_8 - CONNECTION SMS	1	AUX321643		
39401	◆	POLISH FRONT COVER H FLO 6_8 - CONNECTIONS CLAMP ASME-BPE	1	AUX321651		
39401	◆	POLISH FRONT COVER H FLO 6_8 - CONNECTIONS CLAMP ISO 2852	1	AUX321652		
39401	◆	POLISH FRONT COVER H FLO 6_8 - CONNECTIONS DIN 11851	1	AUX321650		
39401	◆	POLISH FRONT COVER H FLO 6_8 - CONNECTIONS SMS	1	AUX321649		
39401	◆	POLISH FRONT COVER H FLO 6_8 - CONNECTIONS DIN 11864	1	AUX321653		

H-FLO 6 S - H-FLO 8 S

* 1, 2, 4... : Quantity in equipment - (1), (2), (4)... : Quantity in kit

Item	Available	Description	Qty*	Ref.	Maintenance kit	Wear part
H FLO 6_8 S COMPLETE TRANSMISSION :						
STANDARD						
39596	◆	STANDARD	1	AUX321730	■	●
39596*	◆	STANDARD_ECS	1	AUX321733	■	●
39596*	◆	STANDARD_ECS_OIL LEVEL SENSOR	1	AUX321734	■	●
39596*	◆	STANDARD_ATEX_ECS_OIL LEVEL SENSOR	1	AUX321735	■	●
WITH BELLOWS MONITORING SYSTEM (BMS)						
39596*	◆	BMS	1	AUX321731	■	●
39596*	◆	BMS_ECS	1	AUX321736	■	●
39596*	◆	BMS_ECS_OIL LEVEL SENSOR	1	AUX321737	■	●
WITH BELLOWS MONITORING SYSTEM (BMS) ATEX						
39596*	◆	BMS ATEX	1	AUX321732	■	●
39596*	◆	BMS ATEX_ECS	1	AUX321738	■	●
39596*	◆	BMS ATEX_ECS_OIL LEVEL SENSOR	1	AUX321739	■	●
39009A**	◆	BEARING GASKETS_RINGS SET G_H FLO 6_8 S	1	AUX321715		
39498		BUSHING	(1)			
39507		SEAL RING	(1)			●
39518		SEAL	(1)			●
39602		SEAL	(1)			
39608		LIP SEAL	(1)			●
39608A		LIP SEAL	(1)			●

* ECS : EASY CLEAN SYSTEM - BMS : BELLOWS MONITORING SYSTEM

** Only for Agreed distributors