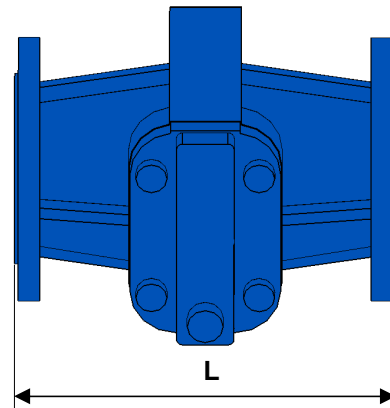
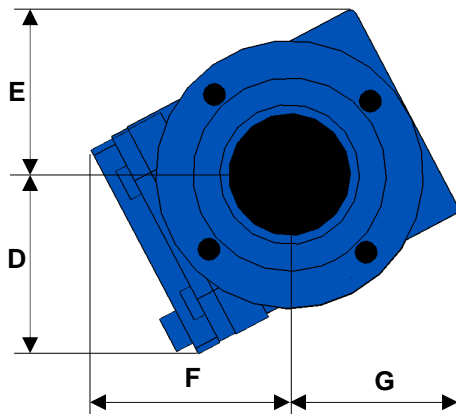


CHARACTERISTICS

	STANDARD	AVAILABLE OPTIONS
Filtration	4 + 1 mm (two grids)	
Ports	DN 65 ISO PN16 Flanges	
Dimensions mm (in.)	D 127 (5.00)	
	E 111 (4.37)	
	F 135 (5.32)	
	G 118 (4.65)	
	L 272 (10.71)	
Weight kg (lbs)	17 (37.48)	



OPERATING LIMITS

	STANDARD MATERIALS	AVAILABLE OPTIONS
Minimum temperature °C (°F)	-10 (14)	
Maximum temperature °C (°F)	110 (230)	
Maximum working pressure bar (psi)	4 (58)	

MATERIALS OF CONSTRUCTION

Part No	PART NAME	STANDARD MATERIALS	AVAILABLE OPTIONS
2	Casing	Cast iron	
5	Cover	Cast iron	
6	4 mm grid (welded on cover)	Carbon steel	Stainless steel
6a	1 mm grid (removable)	Carbon steel	Stainless steel
	Screws	Carbon steel	
	Gaskets	Fibber Asbestos free	