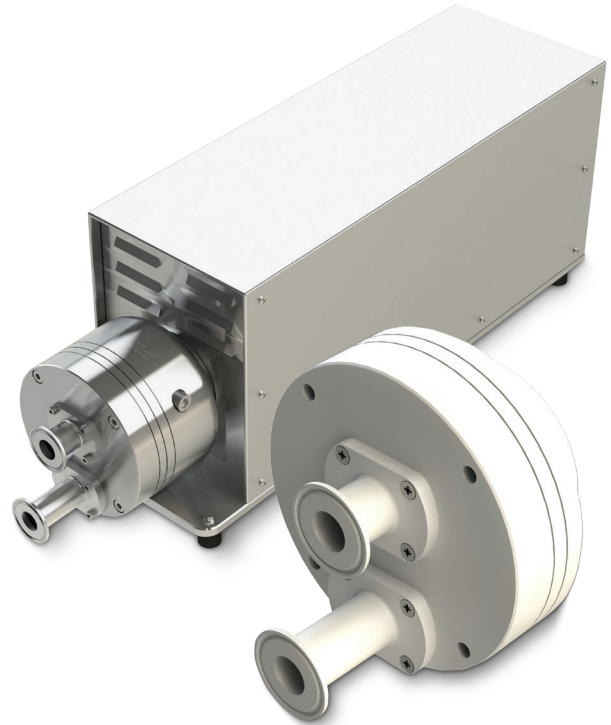


# QF2500

## FOUR-PISTON DIAPHRAGM PUMPS



### THE QF2500 OFFERS THE FOLLOWING MAIN FEATURES AND BENEFITS:

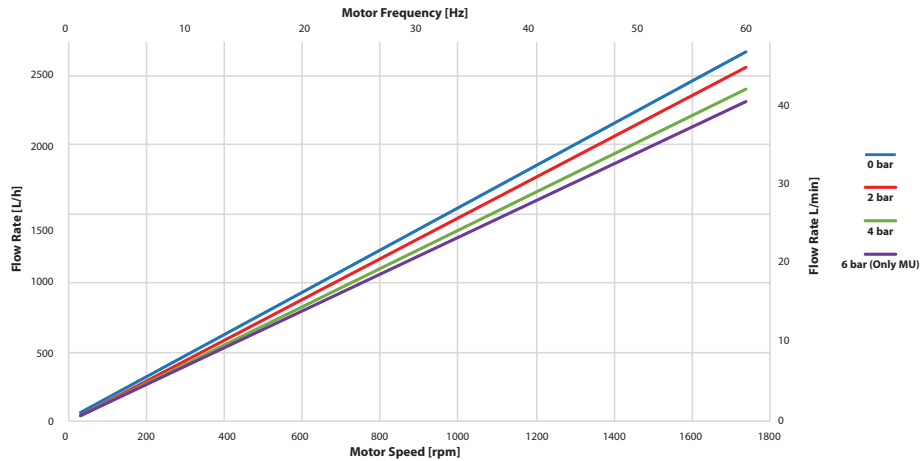
- New pump chamber design (patent pending), available as Multiple-Use and Single-Use model
- Self-draining design
- Up to 125:1 turn-down ratio
- Linear flow performance
- 50-2,500 lph flow range, max. 4/6 bar (58/87 psi)
- High flow stability even at low flow rates
- Clean-In-Place (CIP), Steam-In-Place (SIP), autoclavable
- Typical applications include: Chromatography, TFF, virus filtration, sterile filtration, depth filtration

*Quattroflow develops and manufactures, in close cooperation with its customers, four-piston diaphragm pumps for critical applications in the biopharmaceutical industry. The method of operation of Quattroflow pumps allows them to gently, safely and securely convey aqueous solutions and biological products that are sensitive to shear force. The design does not feature a mechanical shaft seal or wetted rotating parts, ensuring total product containment without abrasion. Additionally, the pumping principle enables risk-free dry-running, low pulsation, self priming, and minimal particle generation.*

<b>Flow Rate Maximum:</b>	
Eccentric Shaft 5°	2,500 lph (41 lpm)
<b>Flow Rate Minimum:</b>	
Eccentric Shaft 5°	50 lph (0.8 lpm)
<b>Pressure:</b>	
Temperature of Fluid < 40° C (104° F) MU/SU	6/4 bar (87/58 psi)
Temperature of Fluid > 40° C (104° F)	4 bar (58 psi)
<b>Maximum Temperature:</b>	
Fluid MU/SU	80/60°C (176/140°F)
CIP MU only	90°C (194°F)
Autoclave	130°C (260°F)
<b>Pump Speed Range:</b>	
rpm	30-1,750
<b>Suction Lift Dry at Maximum Speed:</b>	
Eccentric Shaft 5°	4 - 4.5 m (13.1-14.7 ft)
<b>Volume Specifications:</b>	
Approximated Volume per Revolution at Free Output	27 ml
Approximated Filling Volume Without Connectors	210 ml
<b>Connection Specification (Standard):</b>	
Connectors	1" TC
Position of Connectors	Front

<b>Product Wetted Materials (Standard):</b>	
Pump Chamber MU/SU	SS316L/PP
Valve Plate MU/SU	SS316L/PP
Diaphragms	TPE
Valves EPDM	EPDM
O-rings	EPDM
<b>Certificates/Proofs (Optional):</b>	
Elastomer (product wetted)	USP <88> Cl. VI; FDA21CFR177; BSE/TSE Safe
Stainless Steel Parts (product wetted)	3.1; Surface Roughness; Ferrite Content
<b>Motor:</b>	
Rated speed @ 50Hz	1,445 min <sup>-1</sup>
Voltage	230/400 V
Power	1.5 kW
<b>Pump Dimension with Motor and Housing:</b>	
Length	815 mm (32.09")
Width	215 mm (8.46")
Height	295 mm (11.61")
<b>Pump Weight with Motor and Housing:</b>	
MU	63 kg (139 lb.)
SU	56 kg (123 lb.)

MU = Stainless steel pump chamber (Multiple-Use), SU = Plastic pump chamber (Single-Use)



Authorized PSG® Partner:



PSG Germany GmbH | Quattroflow  
 Hochstraße 150-152  
 47228 Duisburg, Germany  
 Tel: +49 (2065) 89205-0  
 Fax: +49 (2065) 89205-40  
 biotech@psgdover.com  
[psgdover.com/quattroflow](https://psgdover.com/quattroflow)