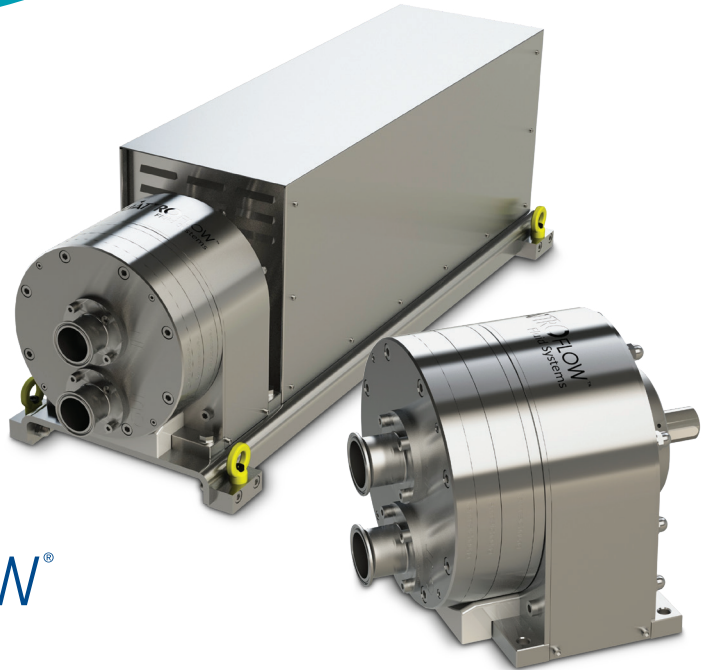


# QF10k



**QUATTROFLOW®**

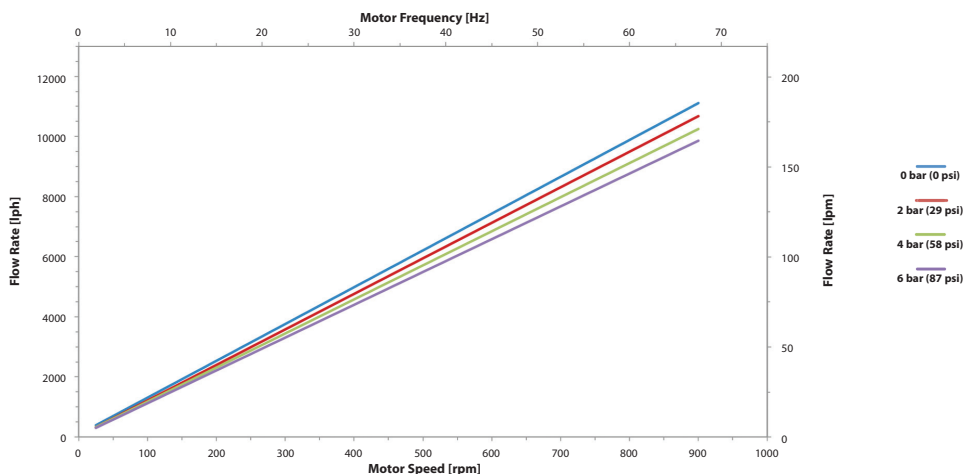
## THE QF10K OFFERS THE FOLLOWING FEATURES AND BENEFITS:

- New stainless steel pump chamber design
- Excellent drainability to maximize product recovery
- 20:1 turn-down ratio
- Linear flow performance
- 500 – 10,000 lph flow range, max 6 bar (87 psi)
- High flow stability even at low flow rates
- Clean-In-Place/Steaming-In-Place (CIP/SIP) and autoclavability
- Available accessories: Control box, power box, diaphragm sensor, PID pressure controller
- Typical applications include: Chromatography and cross-flow filter systems

*Quattroflow develops and manufactures, in close cooperation with its customers, four-piston diaphragm pumps for critical applications in the biopharmaceutical industry. The method of operation of Quattroflow pumps allows them to gently, safely and securely convey aqueous solutions and biological products that are sensitive to shear force. The design does not feature a mechanical shaft seal or wetted rotating parts, ensuring total product containment without abrasion. Additionally, the pumping principle enables risk-free dry-running, low pulsation, self priming, and minimal particle generation.*

Flow Rate Maximum:	
Eccentric Shaft 6°	10,000 lph (167 lpm)
Flow Rate Minimum:	
Eccentric Shaft 6°	500 lph (8.3 lpm)
Pressure:	
Temperature of Fluid < 40° C (104° F)	6 bar (87 psi)
Temperature of Fluid > 40° C (104° F)	4 bar (58 psi)
Maximum Temperature:	
Fluid	80° C (176° F)
CIP	90° C (194° F)
SIP	130° C (260° F)
Autoclave	130° C (260° F)
Pump Speed Range:	
rpm	50 - 900
Suction Lift Dry at 1800 rpm:	
Eccentric Shaft 6°	4 - 4.5 m (13.1-14.7 ft)
Volume Specifications:	
Approximated Volume per Revolution at Free Output	194 ml
Approximated Filling Volume Without Connectors	1,300 ml
Connection Specification (Standard):	
Connectors	2" TC
Position of Connectors	Front

Product Wetted Materials (Standard):	
Pump Chamber	SS316L
Valve Plate	SS316L
Diaphragms	TPE
Valves	EPDM
O-rings	EPDM
Certificates/Proofs (Optional):	
Elastomer (product wetted)	USP <88> Cl. VI; FDA21CFR177; BSE/TSE Safe
Stainless Steel Parts (product wetted)	3.1; Surface Roughness; Ferrite Content
Motor:	
Rated speed @ 50Hz	2,894 min-1
Voltage	230/400 V
Power	3.0 kW
Gear	4.32:1
Pump Dimension with Motor and Housing:	
Length	1,155 mm (45.48")
Width	437 mm (17.20")
Height	430 mm (16.93")
Pump Weight with Motor and Housing:	
	185 kg (408 lb.)



Authorized PSG® Partner:



PSG Germany GmbH | Quattroflow  
 Hochstraße 150-152  
 47228 Duisburg, Germany  
 Tel: +49 (2065) 89205-0  
 Fax: +49 (2065) 89205-40  
 biotech@psgdover.com  
[psgdover.com/quattroflow](https://psgdover.com/quattroflow)