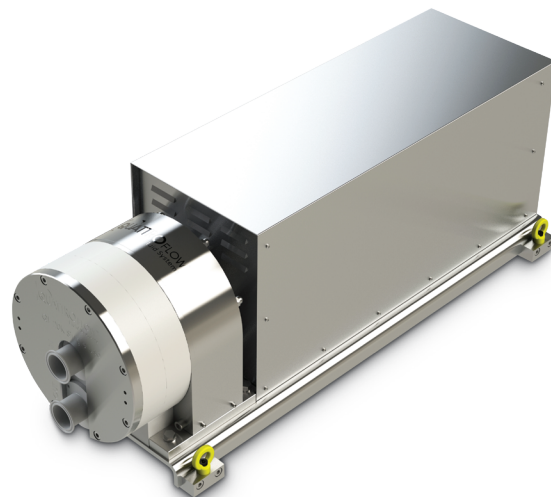


QF20kSU

SINGLE-USE PUMP FOR LARGE SCALE MANUFACTURING



DEVELOPED FOR HIGHER FLOW RATES IN SINGLE-USE APPLICATIONS

THE SINGLE-USE ADVANTAGE

Quattroflow Single-Use pumps have a disposable product-wetted chamber constructed of solid polypropylene (PP) that can be replaced as a complete unit. The simple disposability of the pump chamber saves time and money by eliminating cleaning validation, sterilization and product cross-contamination. Single-Use pumps are critical to reduce equipment turnaround times in the development of biosimilar processes. In general, multi-product facilities are the typical field of application of the Single-Use pumps (e.g. process development, production of clinical reference samples, contract manufacturing).

SINGLE-USE FOUR-PISTON DIAPHRAGM PUMPS

The Quattroflow Single-Use pumps are self-priming and can be run dry. Inside the pump chamber, there are no rotating parts that are subject to friction that might cause particle generation and/or product modification/degradation due to heat generation. A Single-Use pump chamber can be replaced and ready for a new batch in a few minutes. An exchange kit is available to retrofit a Multi-Use pump into a Single-Use pump.

FEATURES & BENEFITS

- Assembled under controlled and clean conditions
- Gamma irradiation possible

Flow rate:	1,000 – 16,000 lph (16.7 – 267 lpm)
Maximum pressure:	4 bar (58 psi)
Connections:	2" TC, front
Motor:	400V, 3-phase

Materials	
Pump chamber:	Polypropylene
Valve plate:	Polypropylene
Diaphragms:	TPE
Valves:	EPDM, 316L
O-rings:	EPDM

PBT-Q-10009-F-01

© 2023 PSG®, a Dover company

Authorized PSG® Partner:



PSG Germany GmbH | Quattroflow
Hochstraße 150-152
47228 Duisburg, Germany
Tel: +49 (2065) 89205-0
Fax: +49 (2065) 89205-40
biotech@psgdover.com
psgdover.com/quattroflow